



KYMCO

**UXV 700i
OFF ROAD**



Owner's Manual



KWANG YANG MOTER CO .,LTD

NO.35 Wan Hsing Street, San Min District

Kaohsiung, Taiwan, Republic Of China

Telephone : 886-7-3822526

Fax : 886-7-3950021

T200 -UBADKA-A7

Printed in Taiwan

Dear KYMCO **UXV 700i** Users:

Thank you for purchasing this KYMCO **UXV 700i** and welcome to the family of KYMCO **UXV 700i** riders. To enjoy safety and more pleasant riding, become thoroughly familiar with this owner manual before you ride the **UXV 700i**.

Your safety depends not only on your own alertness and familiarity with the **UXV 700i** but also the UXV mechanical condition.

A pre-ride inspection before every outing and regular maintenance are essential. The quality of each KYMCO **UXV 700i** is guaranteed.

Note: 1. The information and specifications stated in this manual are for reference only and subject to change without notice.

2. When starting the engine, the battery must be installed to facilitate starting and increase the engine performance.

Table of Contents

- Warnings -----(1- 4)
- Introduction to the UXV 700i ----- (5-23)
- Features and Controls ----- (24-50)
- How to Operate -----(51-58)
- Emission Control System -----(59-60)
- Maintenance and Lubrication -----(61-77)
- Specifications -----(78-82)
- Maintenance Schedule -----(83-85)
- Index
- Maintenance Records

WARNINGS

Battery & EFI Damage Alert

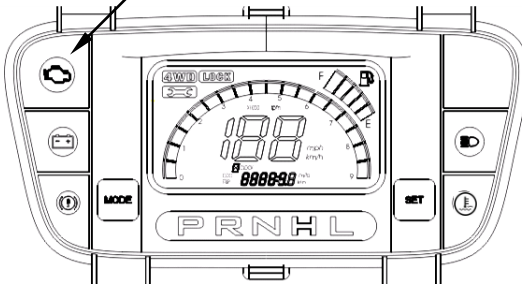
WARNING

To avoid damage from the vehicle's electronic fuel injection system, do not remove or install a battery wire when the ignition switch is at the "ON" position.

CELP indication :

If brightness, it indicates that a fault has been detected in the vehicle's EFI or electrical system. Requires immediate inspection by a KYMCO dealer.

CELP indication



Dangerous Alert

CAUTION:

◆POTENTIAL HAZARD

Operating your UTV in areas with tall or loose vegetation.

◆WHAT CAN HAPPEN

Combustible materials such as tall grass or reeds exposed to the exhaust system's hot components could result in a fire.

◆HOW TO AVOID THIS HAZARD

Clear away plant debris or other materials away from the exhaust system. Use care as the exhaust system can get very hot.

WARNINGS

This vehicle can be dangerous to operate.

An impact or rollover can occur quickly even during routine maneuvers such as turning and driving on hills or over obstacles, if you fail to take proper precautions.

For your safety, understand and follow all the warnings contained in this Owner's Manual and labels on this vehicle.

Keep this Owner's Manual with this vehicle at all times.

Failure to follow the warnings contained in this manual can result in serious injury or death.

Particularly important information is distinguished in this manual by the following notations:



WARNING

Indicates a strong possibility that serious injury or death may Result if instructions are not followed.



CAUTION

Indicates a possibility that equipment or property damage could result if instructions are not followed.



Note:

Gives helpful information

WARNINGS

This vehicle is not a toy and can be dangerous to operate.

- Always go slowly and be extra careful when operating on unfamiliar terrain. Always be alert to changing terrain conditions when operating this vehicle.
- Never operate on too rough, slippery, or loose terrain.
- Always follow proper procedures for turning as represent in this manual. Institution turning at slow speeds before attempting to turn at faster speeds. Do not turn at intemperate speed.
- Never operate on hills too steep for your abilities and cross the side of a hill, Practice on smaller hills before attempting larger hills .
- Always use proper procedures if you stall or roll backward when climbing a hill. To avoid maintain a steady speed when climbing a hill. IN case of you stall or roll return,follow the procedure for braking described in this manual.
- Operation of this vehicle is restricted to people 16 years of age and older who possess a valid operator's license. Usually, no person under the age Of 6 may ride as a passenger on this vehicle.

WARNINGS

Safety Watchful

- **Always** read the owner's manual carefully and follow the operating procedures described. Pay special attention to the warnings contained in the manual and on all labels.
- **Never** operate this vehicle with the canopy frame removed.
- **Always** wear the seat belt, helmet and eye protection when driving.
- **Never** operate this vehicle on a public road, even a dirt or gravel one, because you may not be able to avoid colliding with other vehicles.
- **Always** avoid paved surfaces. This vehicle isn't designed to be used on paved surfaces and may seriously affect handling and control.
- **Always** follow this age prescription:
Operation of this vehicle is restricted to people 16 years of age and older who possess a valid operator's license. Usually, no person under the age of 6 may ride as a passenger on this vehicle.
- **Always** keep combustible materials away from the exhaust system. Exposure to the hot components could result in a fire.

Introduction.

Serial Number Locations

This vehicle has 2 serial numbers: The frame number and Engine serial number.

The frame number is located on the frame near right front wheel place.

Frame Number

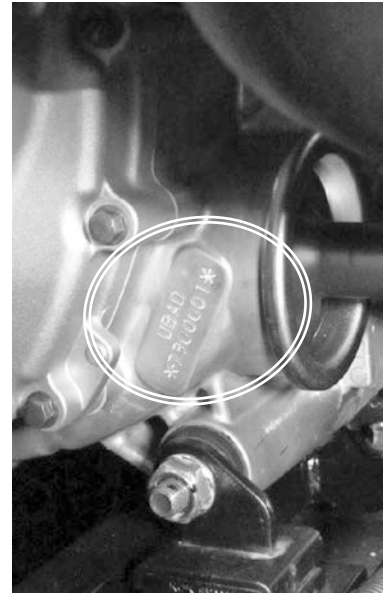


Introduction.

Serial Number Locations

The engine serial number is located on the right side of the engine crankcase.

Engine Serial Number



Introduction.

Ignition Switch Key/Fuel Cap Key Right Glove Compartment Key

Two keys come with this vehicle. Keep the spare in the safe place.

Ignition Switch Key
Right Glove Compartment
Key



Introduction.

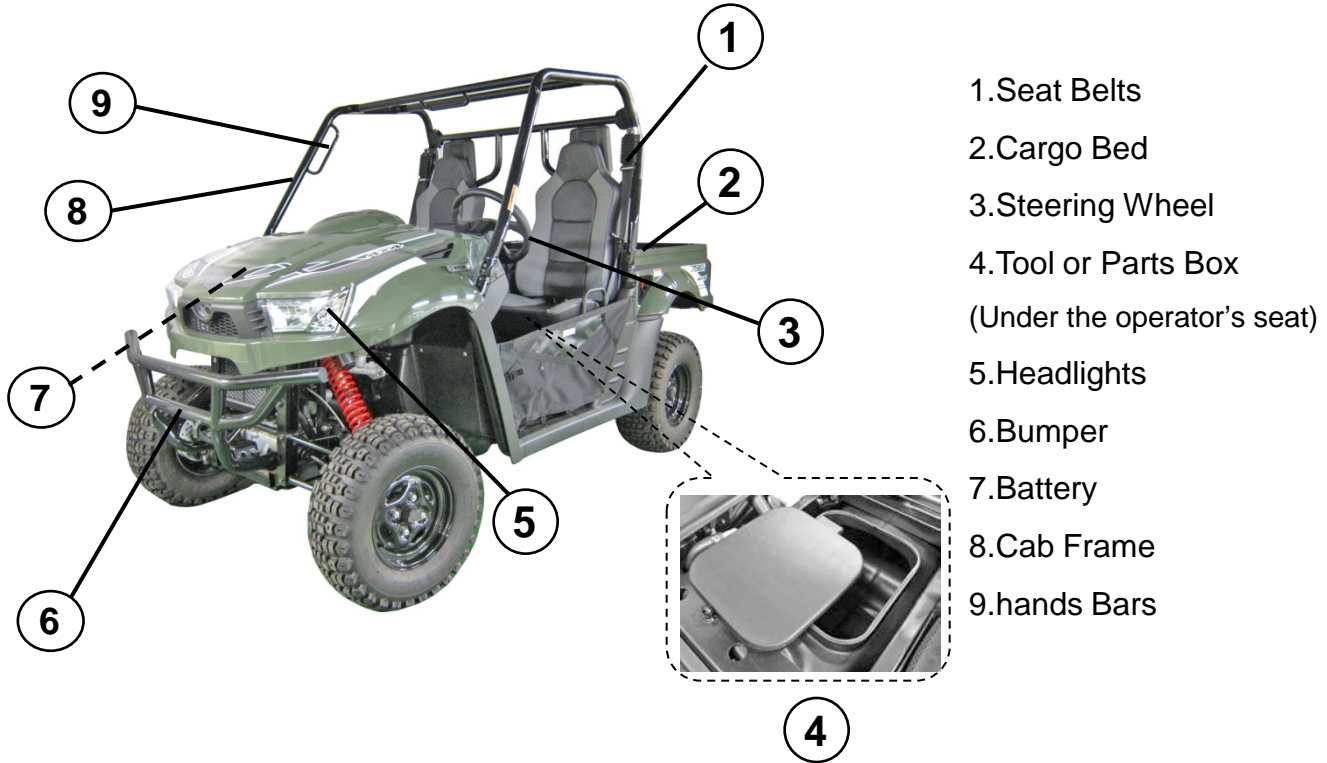
Location Of Parts (1)



- 1.Right Seat 2.Right Latch Handle 3.Right Tail /Brake Light
4.Left Seat 5.Left Latch Handle 6.Left Tail /Brake Light

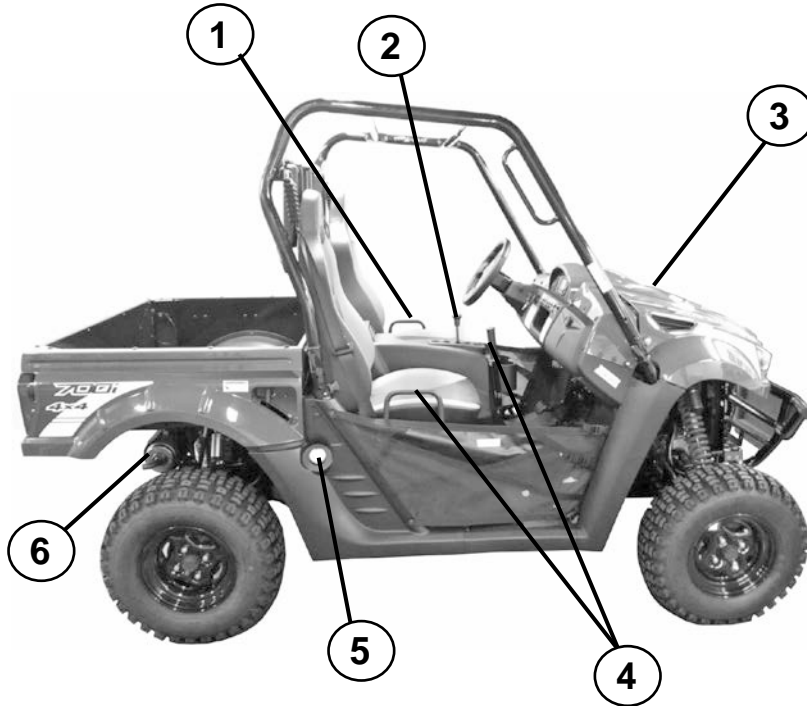
Introduction.

Location Of Parts (2)



Introduction.

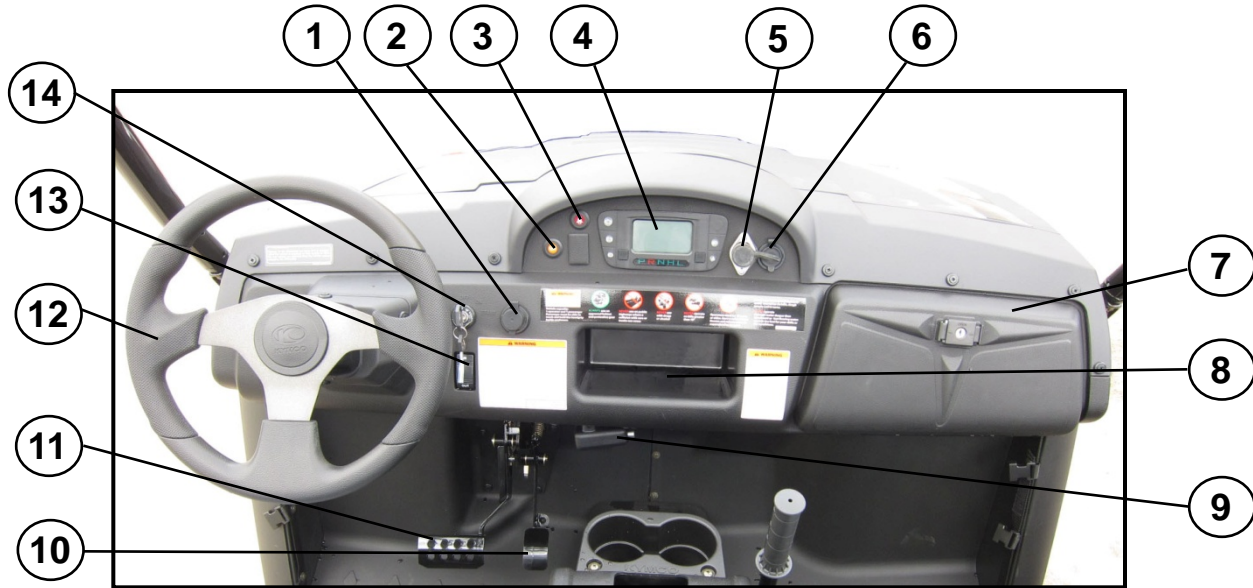
Location Of Parts (3)



- 1.Hand Bar
- 2.Gear Shifter
- 3.Under-Hood
- 4.Passenger Hands Bar
- 5.Fuel Tank Cap
- 6.Muffler & Spark Arrester

Introduction.

Location Of Parts(4)



- 1.USB Charger 2.EPS Warning Light 3.Seat Belt Warning Light 4.Speedometer
5.Winch Socket 6.Auxiliary Outlet 7.Right Glove Compartment 8.Center Glove Compartment
9.Parking Brake 10.Throttle Pedal 11.Brake Pedal 12.Steering Wheel
13.Hazard Switch 14.Ignition Switch

Introduction.

Warning Labels Location



1

2

3



4

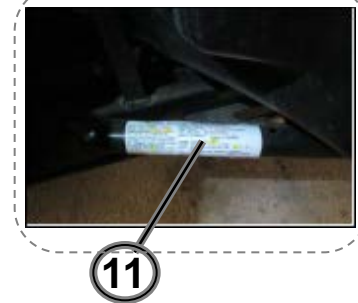
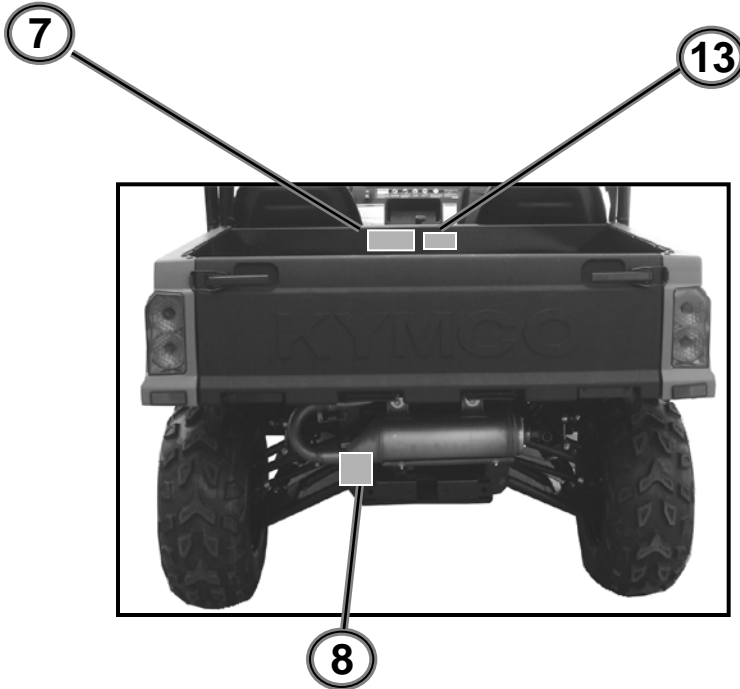
5

6

Under seat

Introduction.

Warning Labels Location



Introduction.

Warning Labels Location



Introduction.

Warning Labels ①

WARNING
Improper use can result in **SEVERE INJURY** or **DEATH**

Vehicle capacity:
1 operator and 1 passenger
Passenger must be able to reach and hold the handgrip inside enclosure.

ALWAYS use an approved helmet and protective gear

NEVER use on public highways where a collision with cars or trucks can occur.

NEVER use with drugs or alcohol

NEVER operate on hills greater than 15°

OPERATOR UNDER 16
Operators must be 16 years or older, have a valid drivers licence and minors must be supervised by an adult.

Use proper driving techniques to avoid overturns on hills, rough terrain and in turns.

NEVER operate
-through water deeper than floorboard or fast flowing water.
-speeds too fast for your skills or the conditions.

87515-LEE8-E00

WARNING
Improper use can result in **SEVERE INJURY** or **DEATH**

Vehicle capacity:
1 operator and 1 passenger
Passenger must be able to reach and hold the handgrip inside enclosure.



ALWAYS use an approved helmet and protective gear

Introduction.

Warning Labels ①



<p>WARNING Improper use can result in SEVERE INJURY or DEATH</p> <p>Vehicle capacity: 1 operator and 1 passenger Passenger must be able to reach and hold the handgrip inside enclosure.</p>	 <p>ALWAYS use an approved helmet and protective gear</p>	 <p>NEVER use on public highways where a collision with cars or trucks can occur.</p>	 <p>NEVER use with drugs or alcohol</p>	 <p>NEVER operate on hills greater than 15°</p>	 <p>OPERATOR UNDER 16</p> <p>Operators must be 16 years or older, have a valid drivers licence and minors must be supervised by an adult.</p>	<p>Use proper driving techniques to avoid overturns on hills, rough terrain and in turns.</p> <p>NEVER operate -through water deeper than floorboard or fast flowing water. -speeds too fast for your skills or the conditions.</p> <p>87515-LEE8-E00</p>
--	---	---	---	---	---	--

 <p>NEVER use on public highways where a collision with cars or trucks can occur.</p>	 <p>NEVER use with drugs or alcohol</p>
---	--

Introduction.

Warning Labels ①

<p>WARNING</p> <p>Improper use can result in SEVERE INJURY or DEATH</p> <p>Vehicle capacity: 1 operator and 1 passenger Passenger must be able to reach and hold the handgrip inside enclosure.</p>	 <p>ALWAYS use an approved helmet and protective gear</p>	 <p>NEVER use on public highways where a collision with cars or trucks can occur.</p>	 <p>NEVER use with drugs or alcohol</p>	 <p>NEVER operate on hills greater than 15°</p>	 <p>OPERATOR UNDER 16</p> <p>Operators must be 16 years or older, have a valid drivers licence and minors must be supervised by an adult.</p>	<p>Use proper driving techniques to avoid overturns on hills, rough terrain and in turns.</p> <p>NEVER operate -through water deeper than floorboard or fast flowing water. -speeds too fast for your skills or the conditions.</p> <p>87515-LEE8-E00</p>
---	---	---	---	--	---	--

 <p>NEVER operate on hills greater than 15°</p>	 <p>OPERATOR UNDER 16</p> <p>Operators must be 16 years or older, have a valid drivers licence and minors must be supervised by an adult.</p>
--	--

Introduction.

Warning Labels ①

 WARNING Improper use can result in SEVERE INJURY or DEATH						Use proper driving techniques to avoid overturns on hills, rough terrain and in turns.
Vehicle capacity: 1 operator and 1 passenger Passenger must be able to reach and hold the handgrip inside enclosure.	ALWAYS use an approved helmet and protective gear	NEVER use on public highways where a collision with cars or trucks can occur.	NEVER use with drugs or alcohol	NEVER operate on hills greater than 15°	Operators must be 16 years or older, have a valid drivers licence and minors must be supervised by an adult.	NEVER operate -through water deeper than floorboard or fast flowing water. -speeds too fast for your skills or the conditions.
						87515-LEE8-E00


Use proper driving techniques to avoid overturns on hills, rough terrain and in turns.

NEVER operate
-through water deeper than floorboard or fast flowing water.
-speeds too fast for your skills or the conditions.

87515-LEE8-E00

Introduction.

Warning Labels ②

 **WARNING**

IMPROPER TIRE PRESSURE OR OVER-LOADING CAN CAUSE LOSS OF CONTROL AND RESULT IN **SEVERE INJURY OR DEATH.**

ALWAYS

- WEAR A SEAT BELT WHEN RIDING IN THIS VEHICLE.
- KEEP YOUR HANDS AND FEET INSIDE THE VEHICLE AND WATCH FOR BRANCHES, BRUSH, OR OTHER HAZARDS THAT COULD ENTER THE VEHICLE.
- ROLLOVER COULD CAUSE **SEVERE INJURY OR DEATH.**
THE ROLL BAR AND SEATBELT CANNOT PROTECT OCCUPANTS IN ALL ACCIDENTS, INCLUDING ROLLOVER.
- DRIVE STRAIGHT UP AND DOWN INCLINES - DRIVING ACROSS THE SIDE OF AN INCLINE INCREASES THE RISK OF OVERTURNS.

NEVER

- EXCEED THE VEHICLE LOAD CAPACITY OF 910 KG (2006 LBS). INCLUDES WEIGHT OF OPERATOR, PASSENGER, CARGO, ACCESSORIES, AND TRAILER TONGUE. MAXIMUM LOAD IN CARGO BED: **190 KG (418 LBS).**
- WHEN LOADED-BACK DOWN A SLOPE AND APPLY BRAKES OR ACCELERATE UPHILL.
- **LOADING/TRAILER TOWING**
CARGO OR TRAILER CAN AFFECT STABILITY AND HANDLING. WHEN LOADED WITH CARGO OR TOWING A TRAILER
 - REDUCE SPEED
 - ALLOW MORE ROOMS TO STOP
 - AVOID HILLS AND ROUGH TERRAIN
 - OPERATE IN LOW RANGE GEARS ONLY

**LOCATE AND READ OPERATOR'S MANUAL.
FOLLOW ALL INSTRUCTIONS AND WARNINGS.**

87517-LEE8-E00

Introduction.

Warning Labels

3

⚠ WARNING

FAILURE TO STOP VEHICLE COMPLETELY BEFORE ENGAGING REVERSE COULD RESULT IN YOUR BEING THROWN FROM THE VEHICLE.

TO ENGAGE REVERSE:

1. STOP VEHICLE COMPLETELY.
2. BRING ENGINE TO IDLE. APPLY BRAKE.
3. SHIFT TRANSMISSION TO NEUTRAL.
4. SHIFT TRANSMISSION INTO REVERSE WHILE APPLYING BRAKE.

WHEN STOPPED:
PUT GEAR SELECTOR IN NEUTRAL AND APPLY PARK BRAKE BEFORE LEAVING THE VEHICLE. READ OPERATORS MANUAL LOCATED UNDER THE PASSENGER SEAT FOR ADDITIONAL INFORMATION. WRITE TO KYMCO FOR FREE REPLACEMENT IF MISSING.

87512-LEE8-E00

4

9

⚠ WARNING

VEHICLE ROLLOVER COULD CAUSE SEVERE INJURY OR DEATH.

THIS STRUCTURE IS NOT A CERTIFIED ROLLOVER PROTECTIVE STRUCTURE (ROPS) AND WILL NOT PROTECT OCCUPANTS IN ACCIDENTS AND ROLLOVERS.

87321-LEE8-E00

5

10

⚠ WARNING



- KEEP HANDS, BODY AND OTHER PERSONS AWAY FROM CLOSING CARGO BOX.
- DO NOT OPERATE THE VEHICLE WITH CARGO BOX UP.

87033-LEE8-E00

Introduction.

Warning Labels ⑥

 **WARNING**

- **IMPROPER TIRE PRESSURE OR OVERLOADING CAN CAUSE LOSS OF CONTROL.**
- **LOSS OF CONTROL CAN RESULT IN SEVERE INJURY OR DEATH.**
- **OPERATING TIRE PRESSURE: SET WITH TIRES COLD.**
 - RECOMMENDED : FRONT : 70 kPa , (0.70 kgf/cm²) , 10 psi**
 - REAR : 98 kPa , (0.98 kgf/cm²) , 14 psi**
 - MINIMUM : FRONT : 63 kPa , (0.63 kgf/cm²) , 9 psi**
 - REAR : 91 kPa , (0.91 kgf/cm²) , 13 psi**
- **NEVER SET TIRE PRESSURE BELOW MINIMUM.**
- **TIRE MAY DISLodge FROM RIM.**
- **GROSS VEHICLE WEIGHT RATING: 910 KG (2006 LBS)**
- **MAXIMUM INCLUDING WEIGHT OF OPERATOR, PASSENGER, ACCESSORIES, CARGO, AND (IF APPLICABLE) TRAILER TONGUE WEIGHT.**

87505-LEE8-E00

Introduction.


Warning Labels

7

⚠ WARNING

SEVERE INJURY OR DEATH CAN RESULT IF YOU IGNORE FOLLOWING:

- MAXIMUM LOAD IN CARGO BED: **250 KG (550 LBS).**
- BE SURE CARGO IS SECURED, A LOOSE LOAD COULD SHIFT AND CHANGE HANDLING UNEXPECTEDLY.
- KEEP WEIGHT IN THE CARGO BED CENTERED, LOW AND FORWARD, TOP-HEAVY LOAD INCREASES THE RISK OF OVERTURNS.
- NEVER CARRY PASSENGERS IN CARGO BED.



13

⚠ WARNING



Do not sit on or use tail gate as a step.

14

CAUTION

Damage to the differential can occur if it is engaged while the vehicle is traveling at high speeds or while the rear wheels are spinning. Stop the vehicle to before engaging the differential.

87322-LKM8-E00

Introduction.

Warning Labels

8

⚠ WARNING

EXCEEDING VEHICLE'S TOWING LIMIT COULD CAUSE AN ACCIDENT.

REDUCE SPEED WHEN TOWING A TRAILER.

DO NOT TOW IN REVERSE OVER 5 mph.

HIGH SPEED WILL RESULT IN LOSS OF CONTROL.

READ OWNER'S MANUAL FOR DETAILS.

- **MAXIMUM TONGUE WEIGHT: 50 KG (110 LBS).**
- **MAXIMUM TOWING CAPACITY: 550 KG (1212 LBS).**

87040-LEE8-E00

11

VEHICLE EMISSION CONTROL INFORMATION

ENGINE DISPLACEMENT - 499 cc ENGINE FAMILY - G37E6-4900E4 PERMISSION/FAMILY APPROVED/TESTED THIS VEHICLE IS CERTIFIED TO OPERATE IN AREAS WHERE THIS VEHICLE CONFORMS TO AS EPA AND CALIFORNIA REGULATIONS APPLICABLE TO 2017 MODEL YEAR NEW UTVs AND IS CERTIFIED TO 7.4 g/kwh @ 90 + 90% (11.5 g/kwh @ 60 ENGINE FAMILY STANDARD ENGINE PARAMETERS OR CALIFORNIA ENGINE CRANK CONTROL SYSTEM - 2.0. FUEL)	ENGINE TUNING/SPECIFICATIONS - IGNITION TIMING - NOT ADJUSTABLE SOLE SPEED - 1000 ± 100 RPM IN NEUTRAL SOLE MIXTURE - NOT ADJUSTABLE VALVE CLEARANCE - 0.10 ± 0.02 mm INTAKE & EXHAUST SPARK PLUG - NGK CRT6 SPARK PLUG GAP - 0.5 mm FUEL - UNLEADED GASOLINE ONLY - 88-10 + 90/10 OCTANE OIL - 10W-30 (SEE THE OWNER'S MANUAL) MANUFACTURED - ** / **** (MONTH/ YEAR)
--	---

KWANG YANG MOTOR CO., LTD. TAINAN KYMCO USA INC. Spartanburg, SC 29307 USA

12

⚠ CAUTION

DO NOT SHIFT TRANSMISSION FORCEFULLY OR WHILE ENGINE IS REVVED UP OR WHILE VEHICLE IS IN MOTION OR TRANSMISSION DAMAGE WILL OCCUR !

87520-LDB5-M30

KYMCO

MODEL: UXV 500i / UXV 500i LE / UXV 500i SE / UXV 500i SP
499 cc 4-Stroke, TBI, Emission Control

KYMCO CARES ABOUT THE ENVIRONMENT !
"0" IS THE CLEANEST AND "10" THE LEAST CLEAN ALLOWED;
YOUR UTV IS A "1.5".

KYMCO Kwang Yang Motor Co., Ltd. Taiwan R.O.C.

KYMCO USA Inc. Spartanburg, SC 29307 USA

87522-LKC3-M30

Features And Controls

Fuel Level Inspection/Refilling

Check if fuel is sufficient.

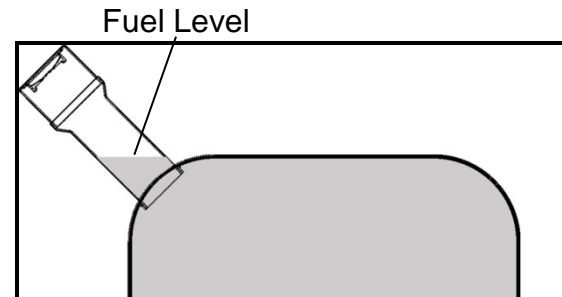
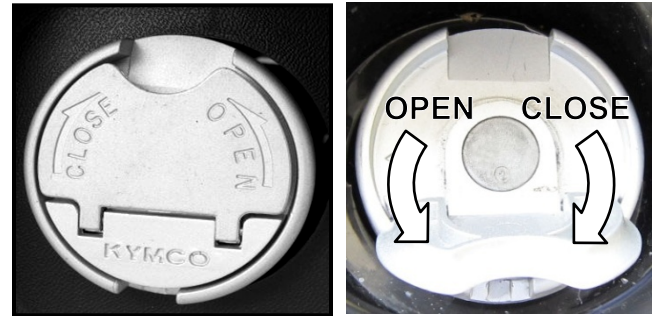
If the fuel gauge pointer is E(flash).refill nonleaded gasoline as soon as possible.

(Refilling Method)

- 1.Turn the tank cap counterclockwise with hand to open the cap.
- 2.Use only nonleaded gasoline.
- 3.Turn the fuel tank cap clockwise to tighten it.
- 4.Fill the fuel tank to the fuel level as shown.
- 5.Close the fuel tank cap in the reverse order of opening.



Be sure to stop the engine before refilling. The gasoline level shall not exceed the fuel level as drawing shown, otherwise the fuel will penetrate out and contaminate the vehicle.

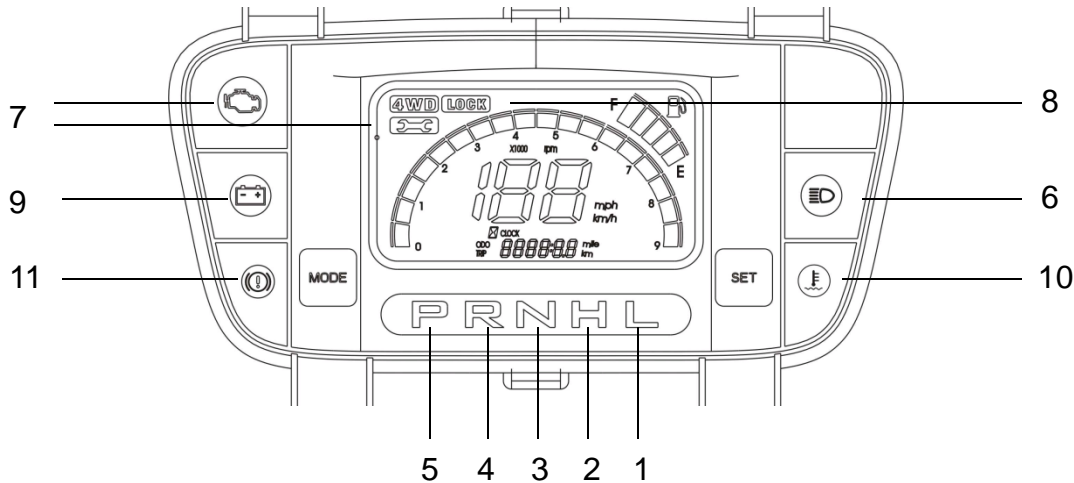


Features And Controls

Indicator Lights

The indicator lights on the console display:

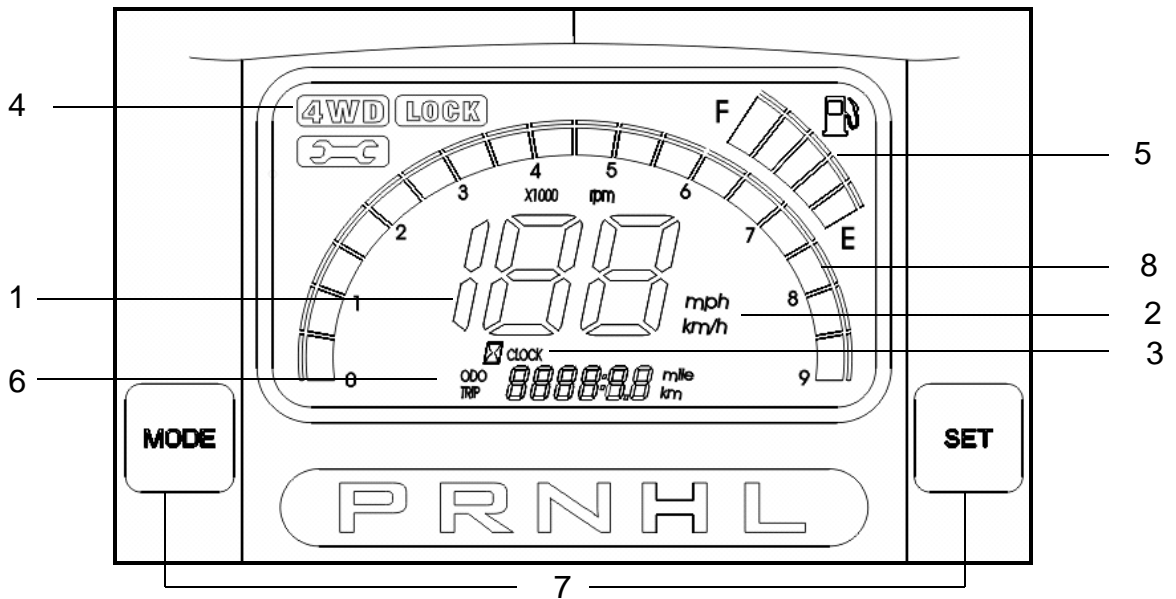
1. Lower Gear
2. High Gear
3. Neutral Gear
4. Reverse Gear
5. Parking Gear
6. High Beam Indicator Light
7. FI System Indicator Light
8. Lock:(Differential Lock Indicator Light)
9. Battery Low Voltage Indicator Light
10. High Coolant Temperature Indicator Light
11. Parking Brake



Features And Controls

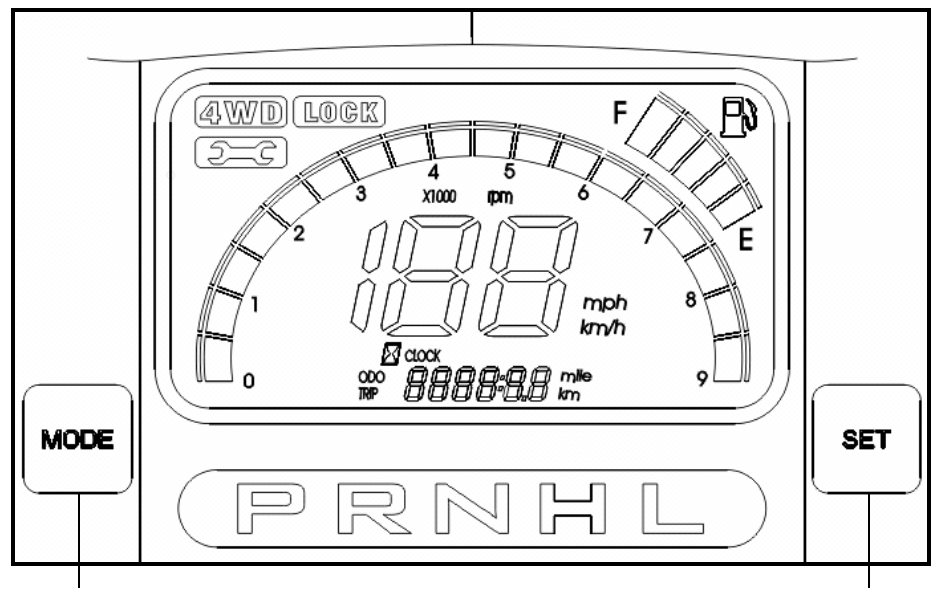
Instruments and Indicators

- 1.Speedometer
- 2. Km/h or Mph
- 3. Clock
- 4. 4WD
- 5.Fuel Gauge
- 6.ODO Meter
- 7. Adjust Button
- 8.Engine Tachometer



Features And Controls

Operation Instruction for Multi-meter

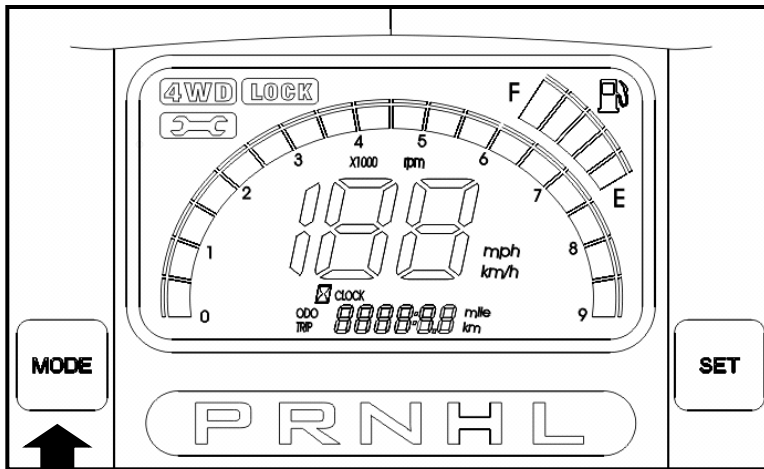


Button A (MODE)

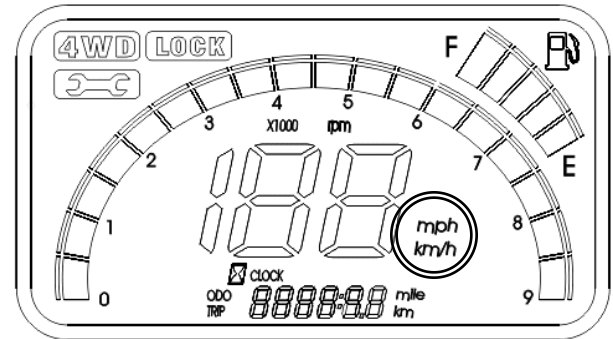
Button B (SET)

Features And Controls

Operation Instruction for Multi-meter



Button A (MODE)

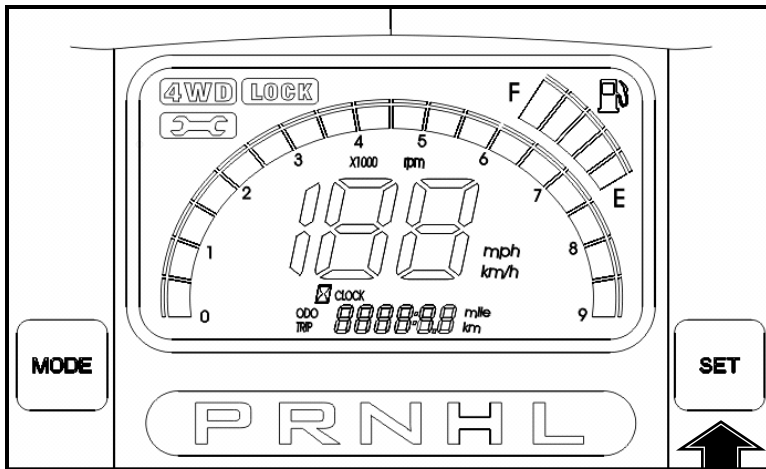


Press and hold button A until 2 seconds over.

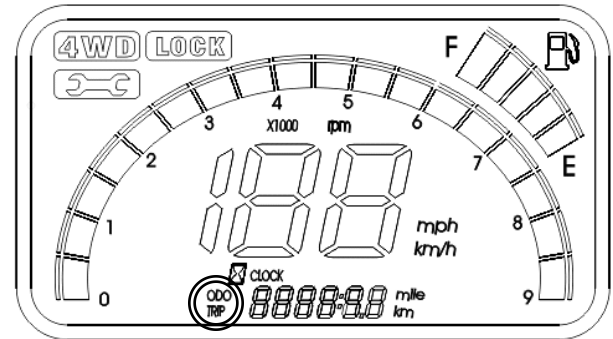
Shift the unit mph or km/h

Features And Controls

Operation Instruction for Multi-meter



Button B (SET)

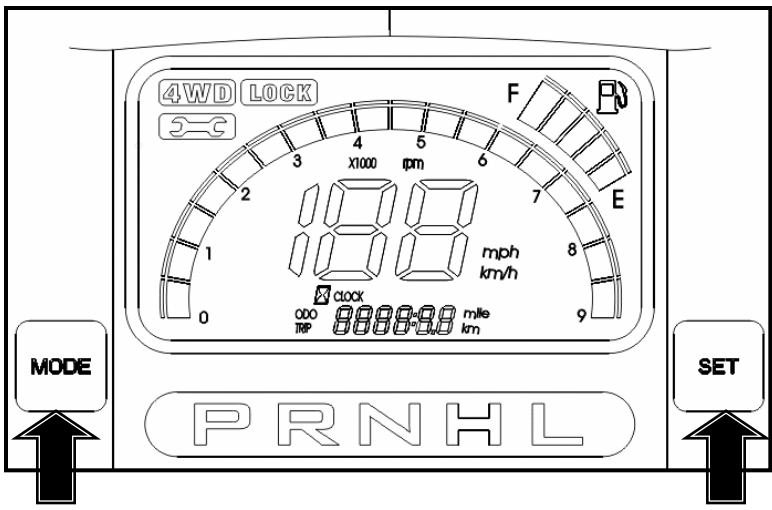


Press and hold button B until 2 seconds over.

Shift function to ODO or TRIP

Features And Controls

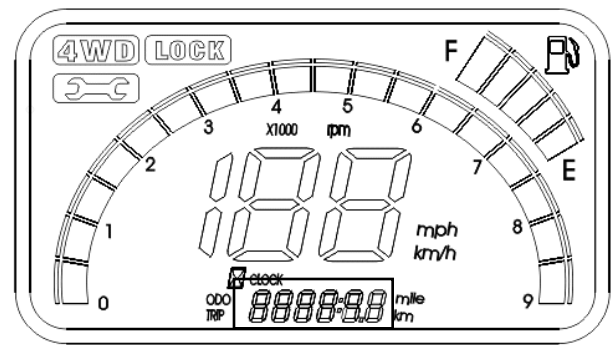
Operation Instruction for Multi-meter



Button A (MODE)

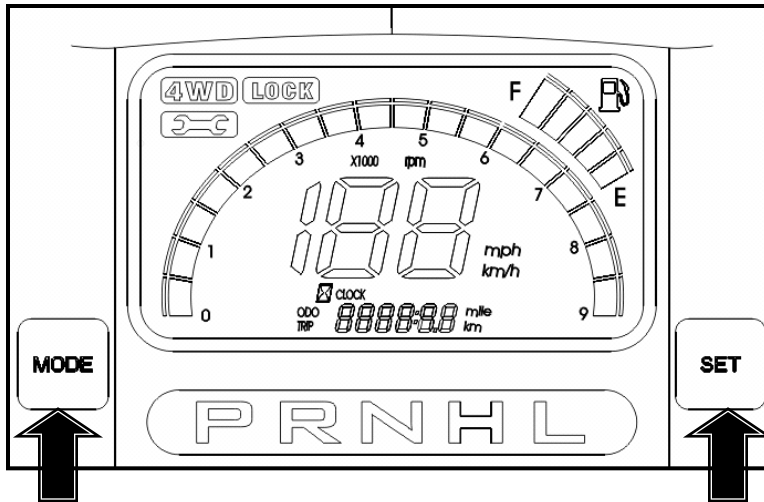
Button B (SET)

Press and hold button A and B until 2 seconds over. Simultaneously to reset to zero when at TRIP function.



Features And Controls

Operation Instruction for Multi-meter



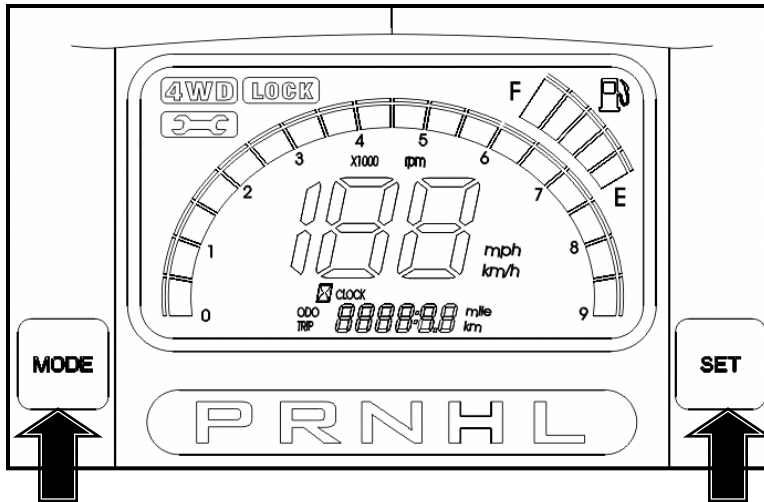
Button A (MODE)

Button B (SET)

Press and hold button A and B until 5 seconds over . when at ODO function then you can see clock position is flash word .

Features And Controls

Operation Instruction for Multi-meter



Button A (MODE)

Button B (SET)

When you seeing clock position is flash word . You can start setting hour item. Press button B adjust correct hours then Press button A you can see minute position is flash. Adjust to correct minute. Waiting for 2 seconds .finish times setting.

Features And Controls

Auxiliary Outlet

The 12-volt receptacle has spade connections on the back that may be used to power an auxiliary light or other optional accessories or lights. The connections are behind the console, under the hood.



Auxiliary Outlet

Steering Wheel

In accordance with the Periodic Maintenance Chart, check the steering wheel for the specified free play and smooth operation.

1. Park the vehicle on level ground.
2. Lightly turn the steering wheel left and right.
3. There should be 0~20mm of free play.
4. If there is excessive free play or strange noises, or the steering feels rough or “catchy”, have the steering system checked by an authorized KYMCO dealer.



Free Play

Features And Controls

EPS(Electronic Power Steering) (Only EPS Model)

Electronic power steering engages when the ignition key is turned to the ON position. EPS remains engaged whether the vehicle is moving or idle.

NOTE:

The EPS system does not require regular maintenance by users. Do not tamper with the electronic control unit or loosen the fittings of steering actuator, or this neutral position setting of the steering will be adversely affected and will cause serious driving problems. If such components need service, see an authorized KYMCO dealer.



EPS indicator (EPS Model only)

The EPS indicator illuminates when the key is turned to the ON position and will go off after 3 seconds. If the light remains on, the EPS system is inoperative. See your authorized KYMCO dealer for service.

Features And Controls

EPS(Electronic Power Steering) (Only EPS Model)

Steering may become more difficult than usual for the following reasons:

1. The steering wheel was continuously turned or held to the full turn stops with torque applied by driver. In this case the ECU works to protect the system from overheating by stopping the power assisting. Stop turning the steering wheel and wait until the system temperature drops, and the power steering recovers.
2. Fuses in the harness may have blown. If the EPS fuse blow, contact an authorized KYMCO dealer for service.

3. Battery voltage has dropped. Voltage drop can happen when the engine starts; inspect the battery voltage.

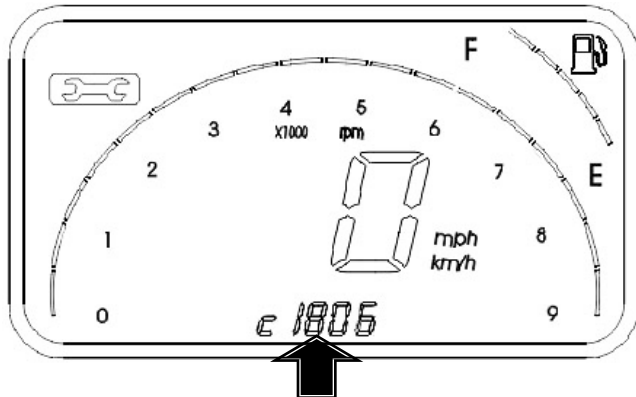
4. Cable harness or connectors may have been disconnected. Contact an authorized KYMCO dealer for service.

NOTE:

If the steering becomes irregular or unusual for any reason other than above, have an authorized KYMCO dealer check the steering and relevant components immediately. In some cases the power steering's neutral position can be affected by an accident or bump.

Features And Controls

EPS(Electronic Power Steering) (Only EPS Model)



EPS Error Code (EPS Model only)

When the EPS system problem detected, the error code will be displayed on the instrument. Do not try to repair by yourself.

See your authorized KYMCO dealer for service.

C1800	DTC-00 Power Error
C1801	DTC-01 Car Speed Error
C1802	DTC-02 Software Error
C1803	DTC-03 Hardware Error
C1804	DTC-04 Motor Signal Error
C1805	DTC-05 Motor Error
C1806	DTC-06 Torque Sensor Signal Error
C1807	DTC - 07 Torque Sense Connector Error
C1808	DTC-08 Safety Relay Error
C1809	DTC-09 It Self Power Reduction Error
C180A	DTC-10 CAN Communication Error
C180B	DTC-11 Torque Supply Voltage Error
C180C	DTC-12 EPS Was Not Calibrated Error
C180D	DTC-13 Motor Encoder Error
C180E	DTC-14 Motor Is Too Hot Error
C180F	DTC-15 Torque Sensor Circuit Error

Features And Controls

Seat Removal

- Pull up the tab below the seat and remove seat.
- Install the seat by sliding into the seat base.
- Push down firmly to make sure the pin is fully seated.



Seat Adjustment

- Pull up the adjust lever.
- Move the seat forward or backward to adjust the seat position.



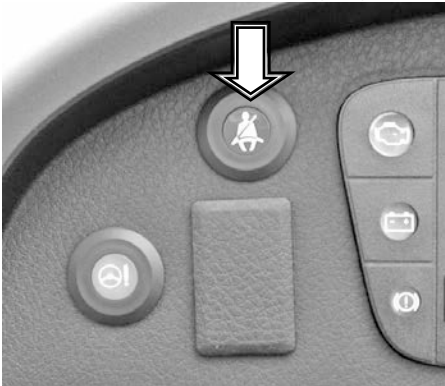
Features And Controls

Seat Belts

Your **UXV700i** is equipped with lap-shoulder seat belts for the operator and passenger. The seat belts should be used by the driver and passenger each time the UTV is driven.

Note: If the seat belt is not fastened, the seat belt warning light will turn on and the driving speed will be limited below 10km/hr.

Seat belt warning light



Seat Belts



Features And Controls

Gear Selector

- 1.Lower Gear
- 2.High Gear
- 3.Neutral Gear
- 4.Reverse Gear
- 5.Parking Gear

To change gears,stop the vehicle and with the engine idling, move the lever to the desired gear.

Do not attempt to shift gears with engine speed above idle or while the vehicle is moving.

Always place the transmission in gear with the parking brake locked whenever the vehicle is left unattended.

Maintaining shift linkage adjustment is important to assure proper transmission function .

See your dealer if you experience any shifting problems.



Features And Controls

Switches

Ignition Switch

The ignition switch is a three-position, key-operated switch, The key can be removed from the switch when it is in the **OFF** position.

- ON:** Electrical circuits are on
Electrical equipment can be used.
- OFF:** Engine off .All electrical circuits are off except Acc.12V
- START:** Electrical starter is engaged by holding ignition switch key in this position. Upon release ,the key will return to the **ON** position.



Features And Controls

Switches

Light Switch

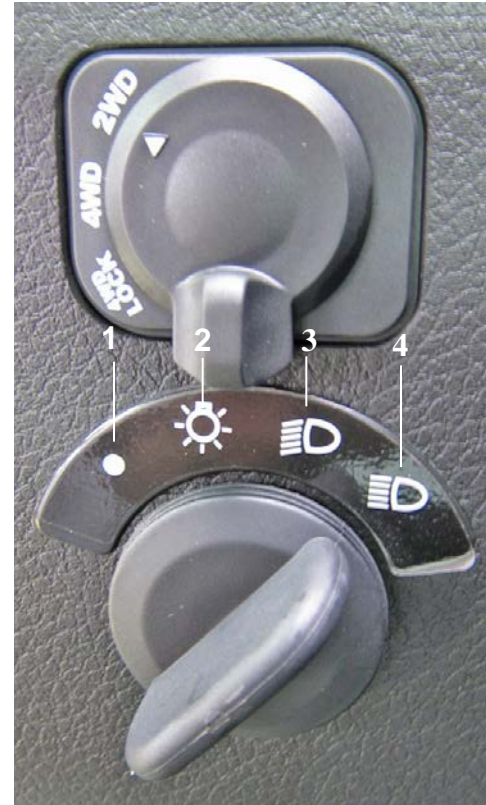
- The ignition switch key must be in the **ON** position to operate the headlights.
- The switch has 4 positions.

1:Light off -At this position , light is turn off.

2: Position light - At this position , light is turn off

3.LO Headlight Beam- When you select this position . low beam will illuminate.

4.Hi Headlight Beam- When you select this position .high beam will illuminate .High beam indicator light will turn on.



Features And Controls

Switches

Drive Select Switch

The 2WD/4WD allows the operator to operate the vehicle in either two-wheel drive (rear wheel) or four wheel drive (all wheels)

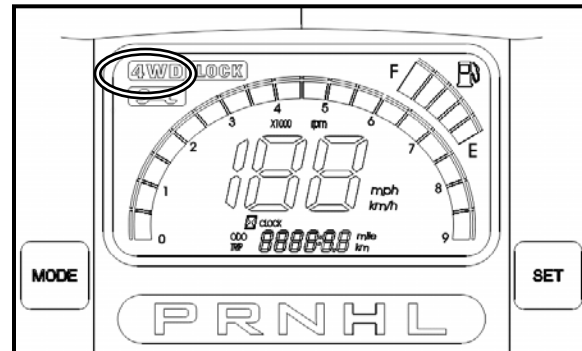
For normal riding on flat, dry, hard surfaces, two-wheels drive should be sufficient.

In situations when additional traction is necessary, four-wheel drive would be the desired choice.

To either engage or disengage the front wheels push and turn the switch to the 4WD position or **the 2WD** position.

Drive Select Indicator

Displays 4WD when selected by the 4WD drive selector switch.



Features And Controls

Differential Lock mode

The vehicle is equipped with a lockable differential that allows the operator to choose between an open differential or a closed differential in low traction situations. Turf version of model is equipped with both front and rear differentials. The different functions as below charts.



Standard Version	Front Left & Right Wheels	Rear Left & Right Wheels	Turf Version	Front Left & Right Wheels	Rear Left & Right Wheels
2WD	Different speed when vehicle turning.	Same speed when vehicle turning.	2WD	Different speed when vehicle turning.	Different speed when vehicle turning.
4WD	Different speed when vehicle turning.	Same speed when vehicle turning.	4WD	Different speed when vehicle turning.	Same speed when vehicle turning.
4WD LOCK	Same speed when vehicle turning.	Same speed when vehicle turning.	4WD LOCK	Same speed when vehicle turning.	Same speed when vehicle turning.

⚠ WARNING

NEVER EXCEED 10 MPH (16 KPH) WHEN DIFFERENTIAL IS LOCKED. LOSS OF CONTROL AND SEVERE INJURY OR DEATH MAY RESULT AT HIGH SPEEDS WHEN DIFFERENTIAL IS LOCKED.

Notice: Damage to the differential can occur if it is engaged while the vehicle is traveling at high speeds or while the rear wheels are spinning. Slow the vehicle to nearly stopped before engaging the differential.

Features And Controls

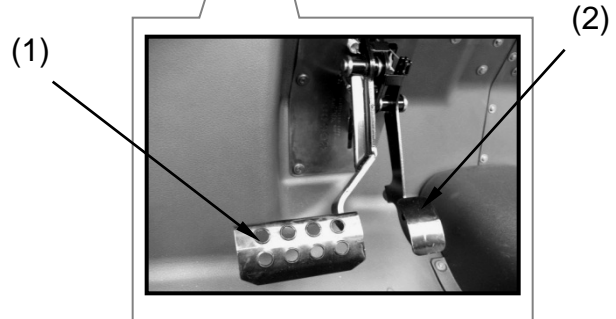
Brake Pedal(1)

Depress the brake pedal to slow or stop or stop the vehicle.

Throttle Pedal(2)

Push the pedal down to increase engine speed .Spring pressure returns the pedal to the rest position when released.

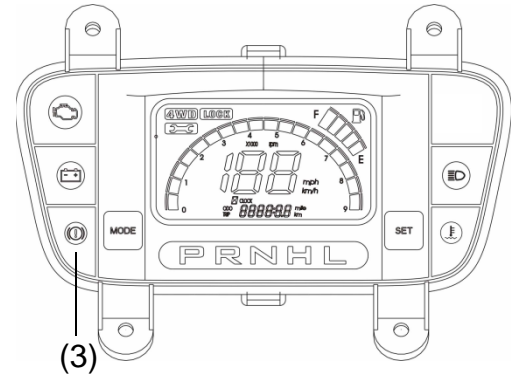
Always check that the throttle pedal returns normally before starting the engine. Make sure there's adequate throttle pedal free play.



Features And Controls

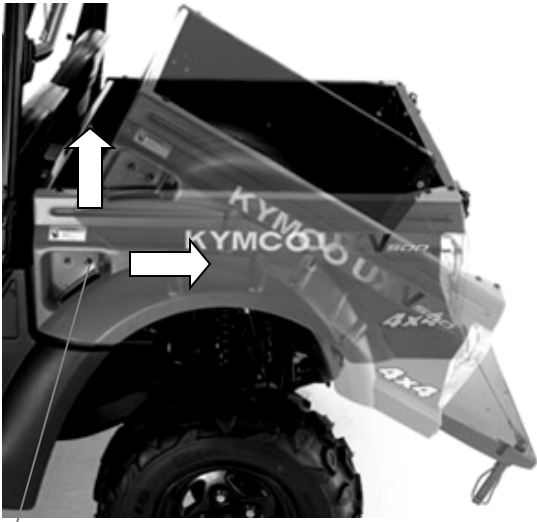
Parking Brake Release(3)

To release the parking brake, pull the release handle. Spring pressure helps return the lever to the released position. Make sure the parking brake lever is functioning properly before each operation.



Features And Controls

Cargo Bed (Lift and lower the cargo bed)



Cargo Bed Lever

To lift

Push the cargo bed release lever to right side, then slowly lift up cargo bed until it stop.

To lower

Lower the cargo bed slowly to its original position and be sure the it is locked into place.

Maximum load in cargo bed:**250** kg

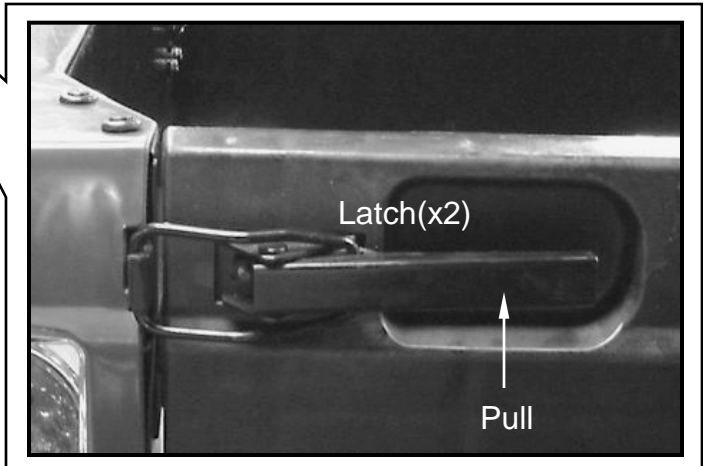
Features And Controls

Cargo Bed(Open and close the tailgate 1)



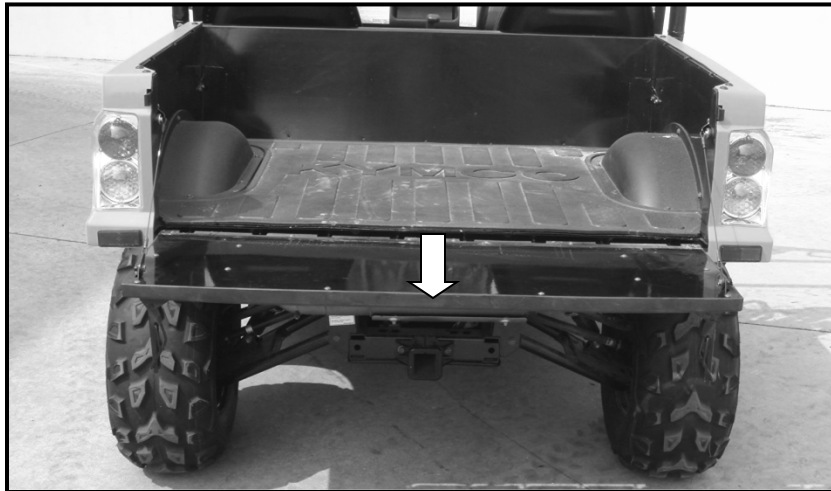
To open---(1)

Unlock the latches, and then lower the tailgate.



Features And Controls

Cargo Bed(Open and close the tailgate 2)



To close

Place the tailgate in the original position, and then hook the latches.

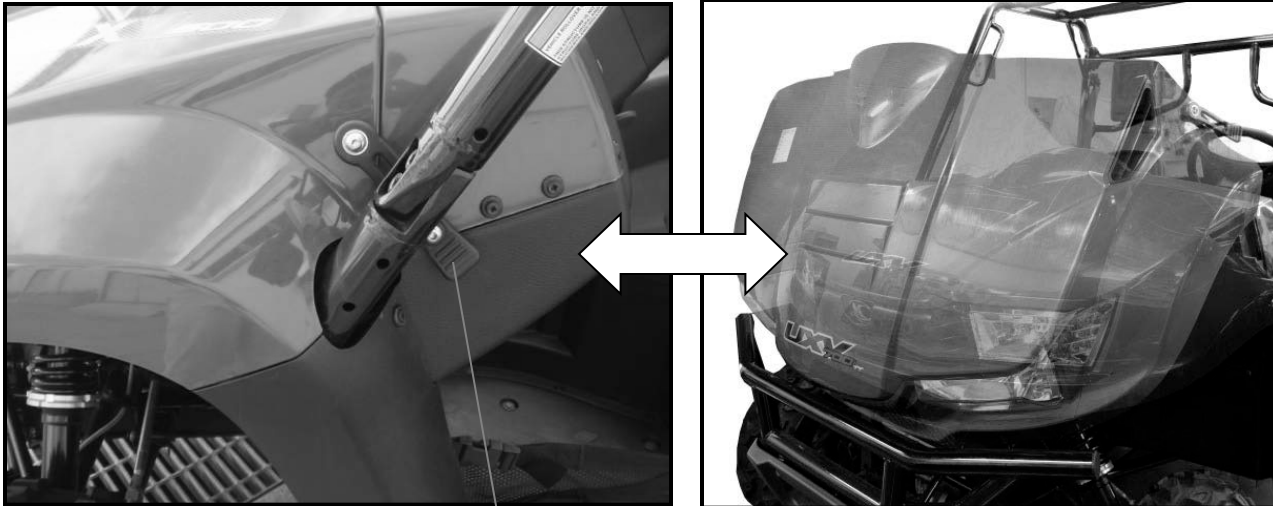
⚠ WARNING	
	Do not sit on or use tail gate as a step.

⚠ WARNING
Never drive your UTV with the tailgate open or the cargo bed in the tilted position. This could cause instability which could lead to a tip over or an accident.
Tilting the cargo bed exposes the exhaust system. Always keep combustible materials away the exhaust system. Exposure to the exhaust system's hot components could result in a fire.

Features And Controls

Under-Hood (To Open)

Unhook the hood latches and 3 and then slowly tilt the hood up until it stops.

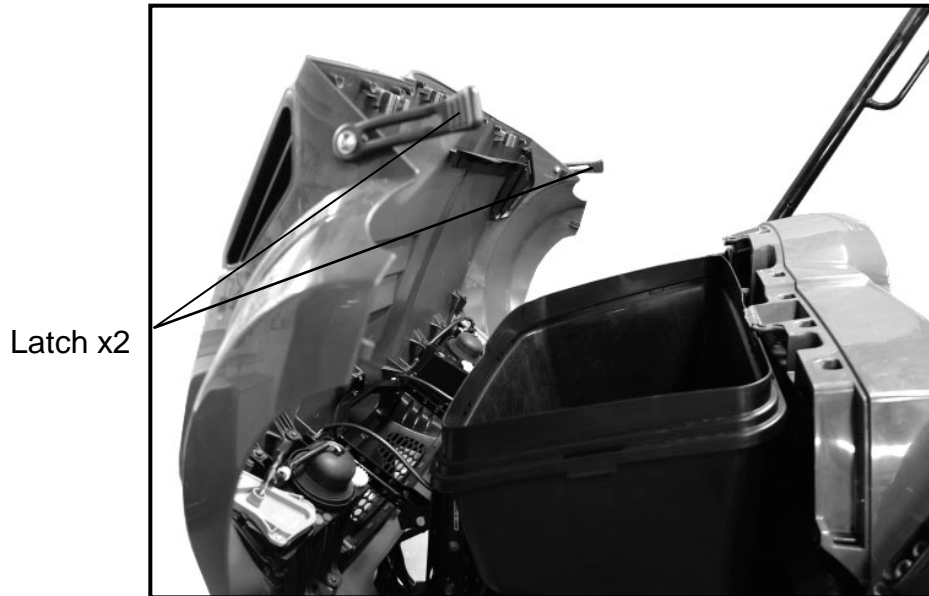


Latch x2

Features And Controls

Under-Hood (To Close)

Lower the hood slowly to its original position and then hook the hood latches .



How to operate

Daily Safety Checks

Check the following items each day before operation.

1. **Fuel**-----Enough fuel in tank,no leaks.
2. **Engine Oil**-----Oil lever between lever holes(when engine is cold),no leaks.
3. **Tires** -----Air pressure(when cold)and check tires cracks, damage or abnormal wear.Check for any imbedded stones or other foreign particles in tread.
4. **Front wheel Air pressure :0.7kgf/cm²;10psi** .
5. **Rear wheel Air pressure :0.98kgf/cm²;14psi** .
6. **Headlight & other indicate light** ----- Check the operate is normal.
7. **Brake/Brake oil lever** ----- Check the operate and oil lever is normal.
8. **Coolant** -----Coolant lever between lever lines(when engine is cold),no leaks.
9. **Front gear case & Rear gear case** ----No oil leaks.
10. **EFI system** ----- Check Engine lamp is not illuminated.

How to operate

Driving Safely(Driving procedures)

- 1.Sit in the driver's seat and fasten the seat belt.
- 2.Wear the helmet and eye protection when driving.
- 3.After starting the engine and allowing it to warm up , shift the transmission into gear.
- 4.Check your surroundings and determine your path of travel.
- 5.Release the parking brake.
- 6.Keeping both hands on the steering wheel, slowly depress the throttle with your right foot and begin driving.Vehicle speed is controlled by the amount of throttle opening & transmission shifting is automatic.
- 7.Drive slowly . Practice maneuvering and using the throttle and brakes on level surfaces.

How to operate

Start the Engine

WARNING

Never run the vehicle in a closed area, such as a garage. Exhaust gases contain carbon monoxide, a colorless, odorless, poisonous gas. Breathing exhaust gas leads to carbon monoxide poisoning, asphyxiation, and death.



1. Wear the seat belts, helmets and eye protections.(both operator and passenger)
2. Set the parking brake.
3. Put the gear shift lever in the “**N**(neutral) position.
4. Turn the ignition switch clock wise to the **START** position; then when the engine starts, release to the **RUN** position foot on the brake.

How to operate

Start the Engine



CAUTION

Do not run the starting attempt. The starter motor may overheat causing severe starter motor damage. Allow 15 seconds between starting attempts to allow the starter motor to cool.

Braking/Stopping

Always allow plenty of room and time to stop smoothly. Sometimes quick stops are inevitable' so always be prepared. Whether you're stopping quickly' do this:

1. Release the accelerator; then press the foot brake pedal to apply the brake.
2. If the wheels lock, release them for a second; then apply them again .On surfaces such as ice, mud ,or loose gravel' pump the brake pedal rapidly.
3. Never ride the brake .Even maintaining minimal pressure on the brake pedal will cause the brake pads drag on the disc and may overheat the brake fluid.

How to operate

Parking

Parking involves following the previous rules for braking; then :

1. After the vehicle stops, shift into neutral gear.
2. Set the parking brake.
3. Turn off the ignition key.
4. If you have to park on the hill, shift to low range, set the parking brake, and block the wheel on the downhill side.

Driving Downhill

Always drive straight down the hill and always avoid hills steeper than 15°.

1. Keep both hands on the wheel.
2. Prior to descending the hill, shift into range and release the accelerator to allow maximum engine brake. Do not use 4 wheel drive when descending a hill. Engine braking can cause the front wheels to slide reducing steering control.

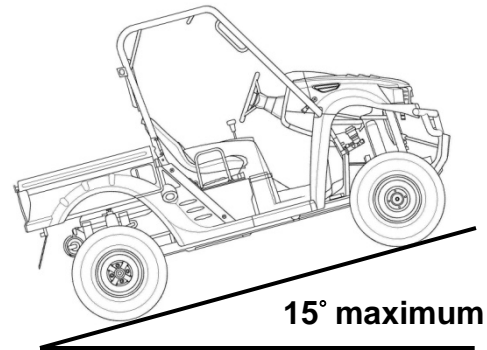
How to operate

Driving Uphill

whenever travel straight uphill, follow these precautions:

1. Always travel straight uphill.
2. Avoid steep hills (15° maximum)
3. Keep both feet on the floor.
4. Proceed at a steady rate of speed and throttle opening.

**NEVER OPERATE UP OR
DOWN HILLS STEEPER
THAN 15°**



How to operate

Crossing Water

UXV700i can only operate in water up to its floorboard. Stay away from fast moving rivers. This vehicle's tires can be buoyant. In deep water, the vehicle may lose traction due to floating.

1. Physically check the depth and current of the water, especially if you can not see the bottom. Also, check for boulders, logs, or any other hidden obstacles.
2. Keep speed slow while maintaining momentum.
3. Make sure you have a way out on the other side of the water.
4. Once you have cleared the water, briefly apply the brakes to make sure they work.

How to operate

Driving in Reverse

Follow these guidelines when operating in reverse:

1. Back slowly.
2. Apply the brakes lightly for stopping.
3. Avoid turning at sharp angles.
4. Always avoid backing downhill.
5. Never open the throttle suddenly while backing.
6. Always inspect left and right fields of vision before backing.

Emission Control System

Crankcase Emission Control System

This engine is equipped with a closed crankcase system .

Blow-by gases forced back to the combustion chamber by the intake system.

The system does not allow the blow-by gases to enter the atmosphere.

Exhaust Emission Control System

The emissions from the exhaust of this vehicle are controlled by engine design, including factory-set fuel delivery and ignition. KYMCO Exhaust Emission Control System including catalytic converter system. please do not change any kymco design.

Noise Exhaust Emission Control System

Do not modify the engine , intake or exhaust components, as doing so may affect compliance with state and local noise level requirements.

Emission Control System

Spark Arrester

Your UXV 700i has a spark arrester.

The spark arrester be installed and functional when the vehicle operated on public lands.

Remove method

remove 3 bolts



Clean method

Use the iron brush cleaning carbon on the spark arrester



Maintenance And Lubrication

Engine Oil

Always check and change the oil at the OWNER MANUAL standard intervals.

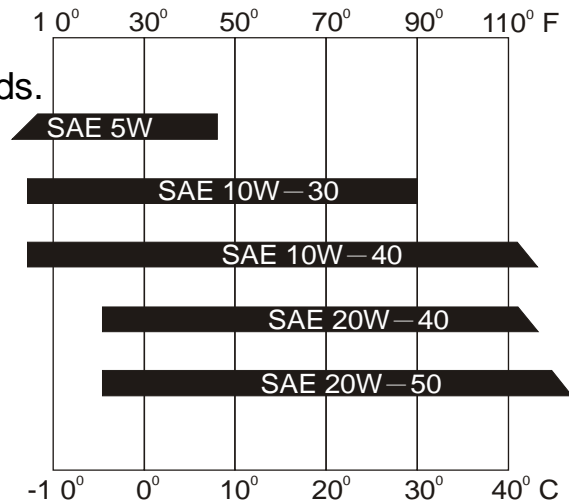
The oil tank is located under the seat.

- 1.Position the vehicle on the surface.
- 2.Start the engine and let it idle for 20~30seconds.
- 3.Stop the engine and remove the seat.
- 4.Add fresh oil into the oil tank .

Make sure the engine oil at the specified level.

Add oil as necessary. Check for leaks.

Oil quantity:
Engine oil:
Periodic oil change:
2.4 L (2.11 Imp qt, 2.54 US qt)
Total amount:
2.9 L (2.55 Imp qt, 3.07 US qt)



Recommended engine oil classification: API Service SJ type or higher

Maintenance And Lubrication

Engine Oil

1.Engine oil level measurement

A. Place the machine on a level place.

B. Warm up the engine for several minutes and stop it.

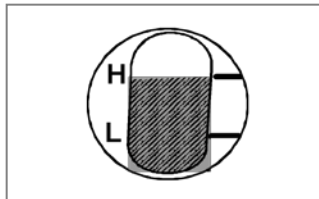
C. Check the oil level through the inspection window.

D. The oil level should be between the maximum (H) and minimum (L) marks.

If the level is low, add oil to raise it to the proper level.

NOTE:

Wait a few minutes until the oil level settles before checking.



Maintenance And Lubrication

Engine oil replacement and oil filter cleaning

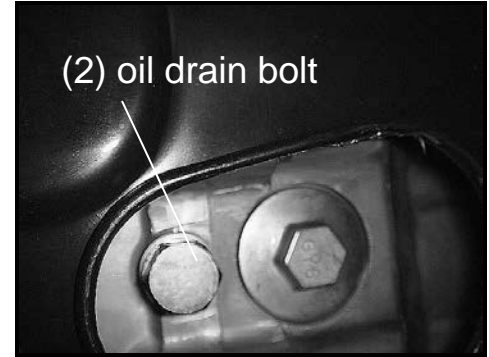
1. Place the machine on a level place.
2. Warm up the engine for several minutes and stop it.
3. Place a container under the engine.
4. Remove the oil fill cap (1) and oil drain bolt (2) to drain the oil.

CAUTION:

Be sure no foreign material enters the crankcase.

CAUTION:

When removing the oil filter cap, the compression spring, oil strainer and O-ring will fall out. Take care not to lose these parts.



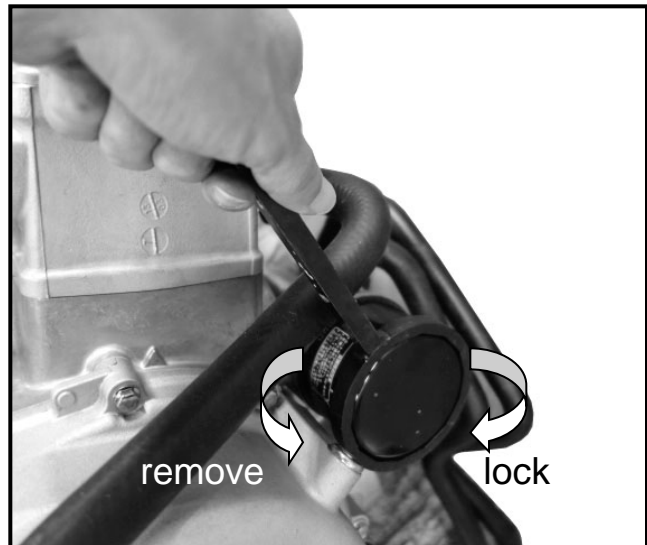
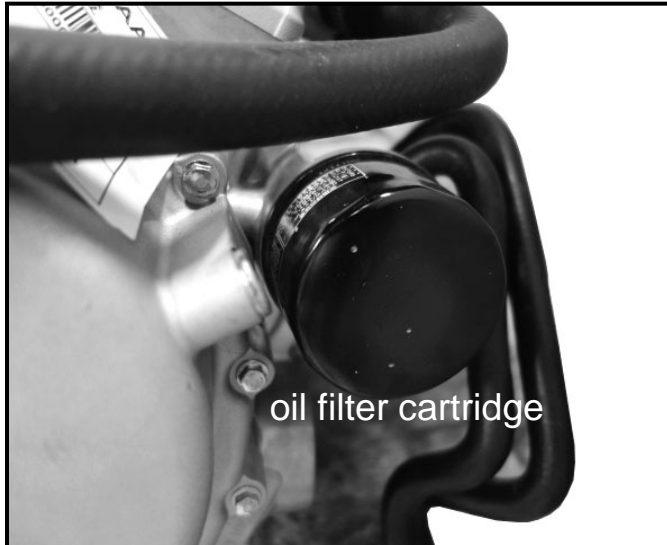
(1) oil fill cap

Maintenance And Lubrication

NOTE:

Skip steps E to I if the oil filter cartridge is not being replaced.

Remove the oil filter cartridge with an oil cartridge wrench.



Maintenance And Lubrication

Changing the rear gear box oil

1. Place the vehicle on the a level surface.
2. Place a container under the rear gear box to collect the used oil.
- 3.Remove the rear gear box oil drain bolt(1) and rear gear box oil filler cap (2).
- 4.Install the rear gear box oil drain bolt(1) and then tighten it to the specified torque.
- 5.Fill the rear gear box oil with recommended oil.
- 6.Install the rear gear box oil filler cap(2) and then tighten it to the specified torque.

Tightening torque

Drain bolt : 20 N-m (2 kgf-m)

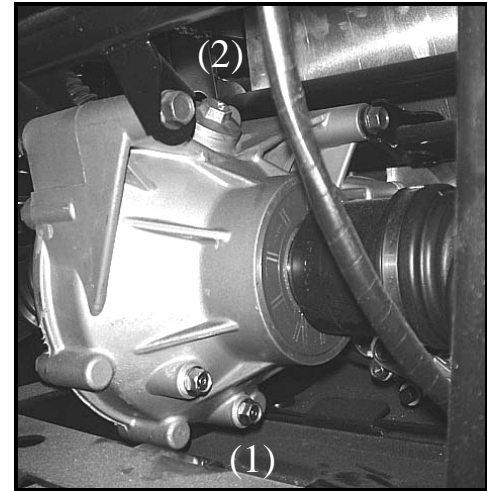
Oil filler cap : 14.7 N-m (1.5 kgf-m)

Recommended oil : SAE 80

Oil quantity :

Periodic oil change

0.23L



Maintenance And Lubrication

Changing the front gear box oil

1. Place the vehicle on the a level surface.
2. Place a container under the front gear box to collect the used oil.
3. Remove the front gear box oil drain bolt(1) and front gear box oil filler bolt (2).
4. Install the front gear box oil drain bolt(1) and then tighten it to the specified torque.
5. Fill the front gear box oil with recommended oil.
6. Install the front gear box oil filler bolt(2) and then tighten it to the specified torque.

Tightening torque

Drain bolt : 32 N-m (3.2 kgf-m)

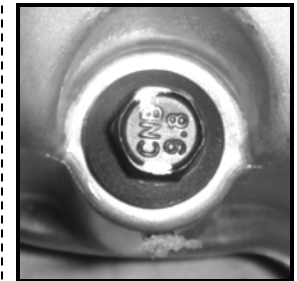
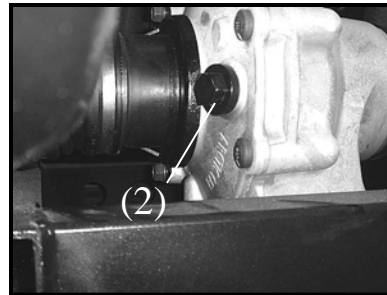
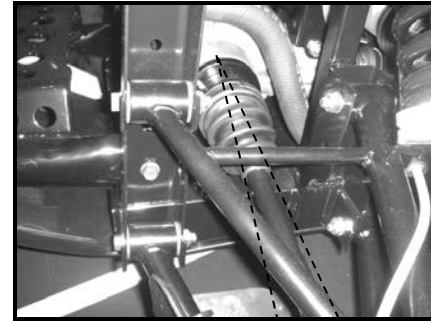
Oil filler bolt : 35 N-m (3.5 kgf-m)

Recommended oil : SAE 80

Oil quantity :

Periodic oil change

0.25L



Maintenance And Lubrication

BRAKE FLUID INSPECTION

Check if the fluid level is below the lower level mark through the inspection window.

WARNING

POTENTIAL HAZARD

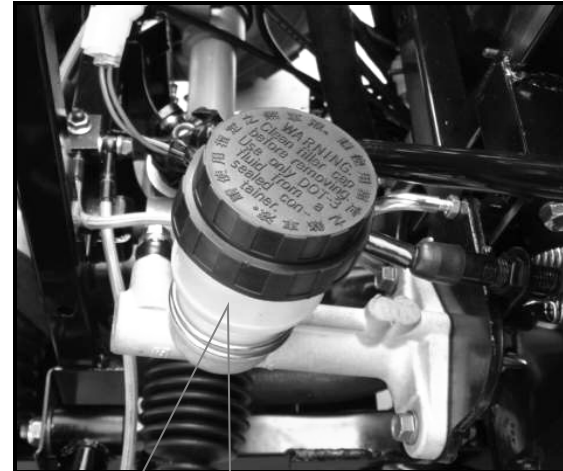
Brake fluid contacting the skin or eyes.

WHAT CAN HAPPEN

May cause irritation.

HOW TO AVOID THE HAZARD

Avoid contacting brake fluid with the skin or eyes. In case of contact, flush thoroughly with water and call a doctor if your eyes were exposed.



- (1) Lower level mark ———
(2) Upper level mark ———

Maintenance And Lubrication

Air Cleaner

Remove the center cover fasteners.

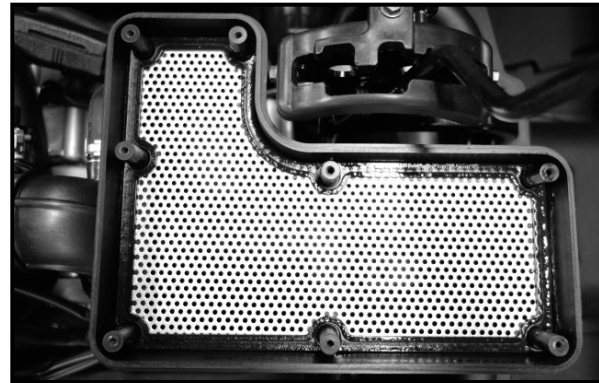
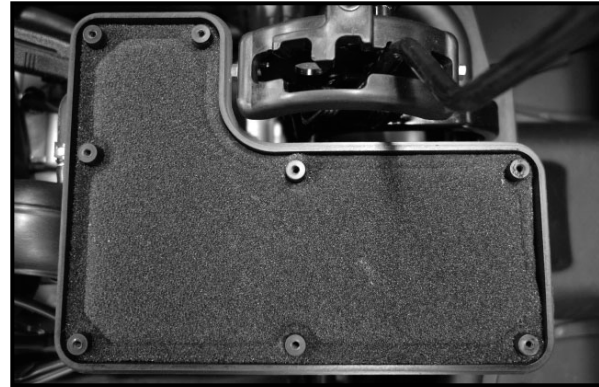
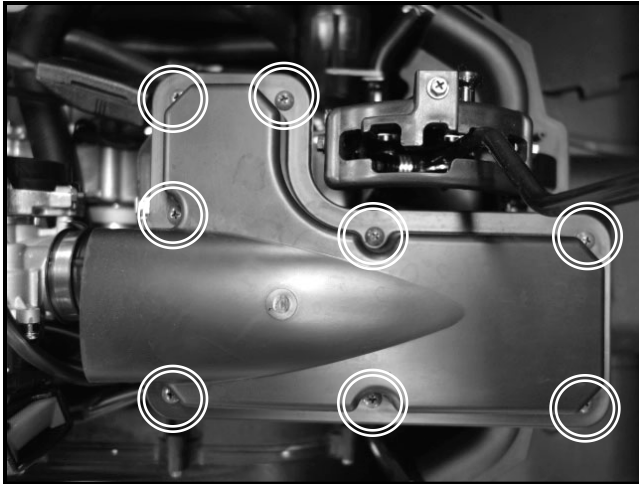
Remove gear selector screw and center cover.



Maintenance And Lubrication

Air Cleaner

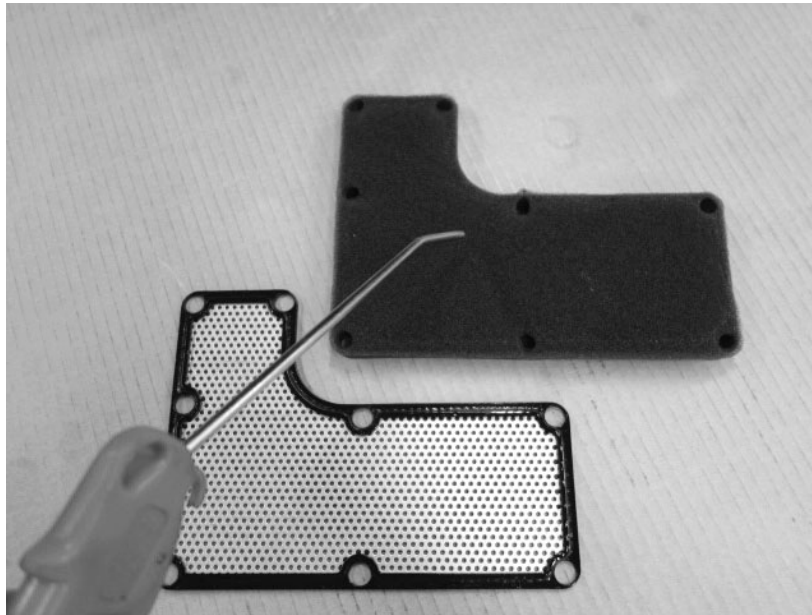
Remove air cleaner cover.
Remove air filter element.



Maintenance And Lubrication

Air Cleaner

Using high pressure air to clean air filter element .
Inspect the air filter element and replace it if damaged.



Maintenance And Lubrication

Battery Remove

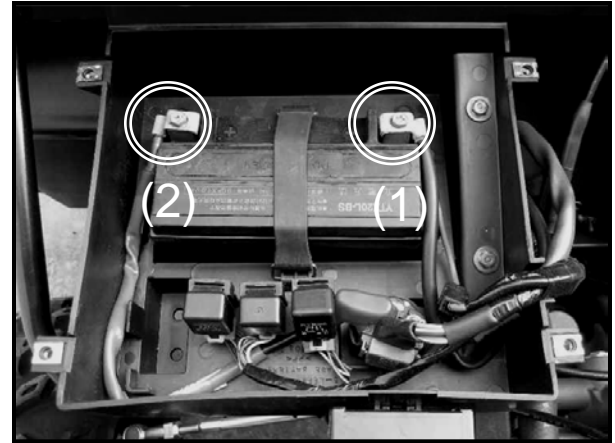
1. Make sure the ignition switch is **OFF**.
2. Remove the under-hood hook & bolts.
3. Remove the battery cover screws.
4. Disconnect the negative (-) terminal lead (1) from the battery first, then disconnect the positive (+) terminal lead (2).
5. Remove the battery.

Battery installation

1. Install in the reverse order of removal.
2. After installing the battery, check to see if the battery cables are routed correctly.

NOTE:

First connect the positive (+) cable and then negative (-) cable to avoid short circuit.



Maintenance And Lubrication

Fuse Replacement

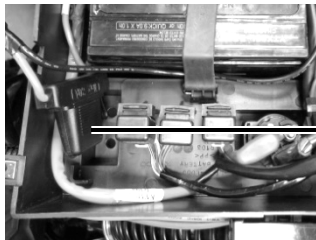
The fuse box stored in the battery compartment.

To replace a fuse:

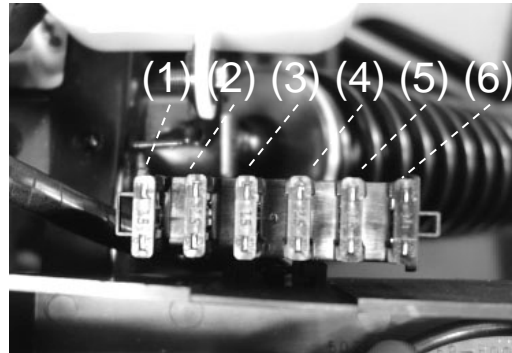
1. Make sure the ignition switch is **OFF**.
2. Remove the under-hood.
3. Open the fuse box cap.
4. Pull the old fuse out of the fuse holder.
5. Push the new fuse in to the fuse holder.
6. Close the fuse box cap and install seat.

CAUTION:

To prevent accidental short-circuiting, turn off the main switch when checking or replacing a fuse.



EPS Fuse 80A
(EPS Model only)



- (6) FAN MOTER-----10A
- (5) IGNITION-----15A
- (4) LIGHT-----15A
- (3) DC12V POWER-----15A
- (2) FUEL -----15A
- (1) SPARE-----15A

Maintenance And Lubrication

Cooling System Inspection

1. Remove the under-hood hook & pin bolts.
2. Check the coolant level in the coolant reservoir when the engine is cold as the coolant level will vary with engine temperature.

The coolant level should be between the maximum and minimum marks.

3. If the level is low, remove the coolant reservoir cap, and then add coolant or distilled water to raise it to the specified level.

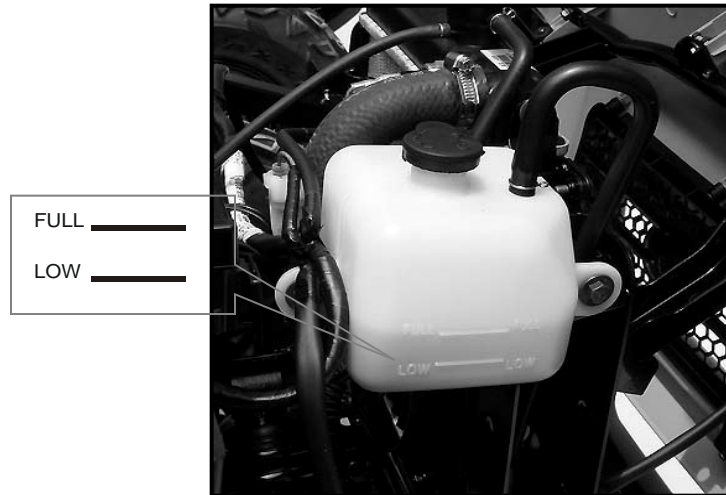
Recommended Coolant Solution

Coolant Mixture Ratio:

Water 50%:Antifreeze 50%(1:1)

NOTE:

A permanent type of antifreeze is installed in the cooling system when shipped. It is colored green and contains ethylene glycol. It is mixed at 50% with water and has a freezing point of -35°C (-31°F)



Maintenance And Lubrication

Wheel Removal

1. Elevate the wheel by placing a suitable stand under the frame.
2. Remove the nuts from the wheel.
3. Remove the wheel assembly.



Wheel Installation

When reinstalling a wheel, tighten the wheel nuts in a crisscross (rather than a circular) pattern.

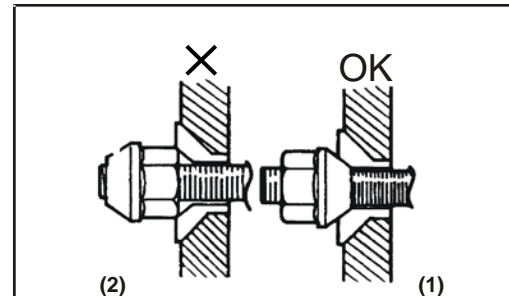
Be sure the tapered side of the wheel nuts (1) face the wheel rim (2).

Wheel nut torque:

Front: 61 N-m (6.1 kgf-m, 44 lbf-ft)


Rear: 61 N-m (6.1 kgf-m, 44 lbf-ft)

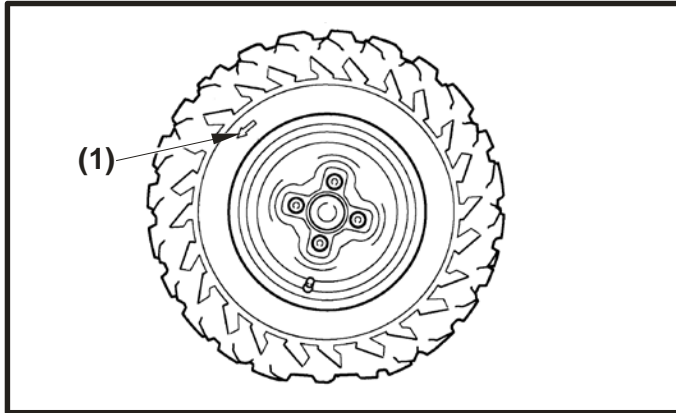
Be sure the tapered side of the wheel nuts (1) face the wheel rim (2).



Maintenance And Lubrication

NOTE:

The arrow mark  on the tire must point toward the rotating direction of the wheel.



(1) Arrow mark

WARNING

POTENTIAL HAZARD
Installing wheels improperly.

WHAT CAN HAPPEN
A wheel may come loose, possibly leading to an accident.

HOW TO AVOID THE HAZARD
Carefully follow the instructions in this Owner's Manual when installing.

Maintenance And Lubrication

Spark Plug Inspection

The spark plug is an important engine component and is easy to inspect. The condition of the spark plug can indicate the condition of the engine.

For example, a very white center electrode porcelain color could indicate an intake air leak or carburetor problem for that cylinder.

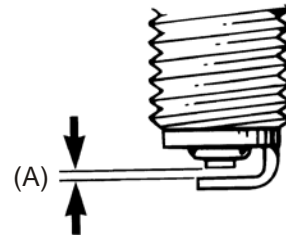
Do not attempt to diagnose such problems yourself.

Instead, take the machine to a KYMCO dealer. You should periodically remove and inspect the spark plug because heat and deposits will cause the spark plug to slowly break down and erode. If electrode erosion becomes excessive, you should replace the spark plug with one of the proper type.

Standard spark plug (NGK): CR7E

Before installing the spark plug, measure the electrode gap with a feeler gauge and adjust to specification.

**Spark plug gap:
0.6~0.7 mm (0.024~0.028 in)**



(A) Spark plug gap

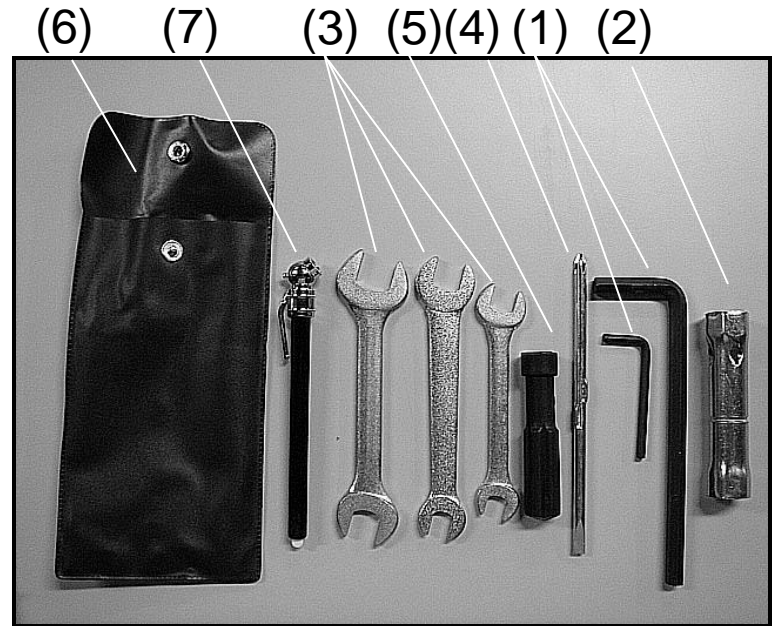
Maintenance And Lubrication

Tool Kit

The tool kit put down location at **Right Glove Compartment** .

The tool kit includes the following items:

- (1) Hexagon wrench
- (2) Spark plug wrench
- (3) 8/12 ; 10/14 ; 17/19 mm wrench
- (4) Screwdriver
- (5) Screwdriver handle
- (6) Tool bag
- (7) Air pressure gauge



Specifications

MODEL UXV700 *i*(OFF ROAD)

DIMENSIONS:

OVERALL LENGTH	113 in(2870 mm)
OVERALL WIDTH	59.06 in(1500 mm)
OVERALL HEIGHT	72.84 in(1850 mm)
SEAT HEIGHT	31.69 in(805 mm)
WHEELBASE	75.20 in(1910 mm)
GROUND CLEARANCE	12.21 in(310 mm)
MINMUN. TURNING RADIUS	181.10 in(4600 mm)

BASIC WEIGHT:

WITH OIL AND FULL FUEL TANK	570kg
MAX. CARGO BED LOAD	250kg
DRY WEIGHT	540kg
MAX. WEIGHT CAPACITY	350kg

ENGINE:

ENGINE TYPE	4 -STROKE,SOHC
CYLINDER ARRANGEMENT	SINGLE CYLINDER
BOREx STROKE	4.02X3.35 in(102X85 mm)
ACTUAL DISPLACEMENT	695cc
COMPRESSION RATIO	10.5:1
STARING SYSTEM	ELECTRIC STARTER
LUBRICATION SYSTEM	WET SUMP

Specifications

MODEL	UXV700 <i>i</i> (OFF ROAD)
ENGINE GEAR BOX:	
CAPICITY/EXCHANGE/TYPE	2.9L/2.4L/5W-30
FRONT GEAR BOX:	
CAPICITY/EXCHANGE/TYPE	270ML/250ML/SAE80#
REAR GEAR BOX	
CAPICITY/EXCHANGE/TYPE	250ML/230ML/SAE80#
AIR FILTER:	SPONGE ELEMENT
FUEL:	
TYPE	UNLEADED GASOLINE
FUEL TANK CAPACITY	8.32 gal (32 L)
THROTTLE BODY:	
TYPE/MANUFACTURER	PTA1/KYMCO
SPARK PLUG:	
TYPE/MANUFACTURER	CR7E-NGK
SPARK PLUG	0.6~0.7mm
CLUTH TYPE:	WET CENTRIFUGAL AUTOMATIC

Specifications

MODEL	UXV700 <i>i</i> (OFF ROAD)
TRANSMISSION:	
PRIMARY REDUCTION SYSTEM	V-BELT
SECONDARY REDUCTION SYSTEM	SHAFT DRIVE
TRANSMISSION TYPE:	CVT
TIRE:	
TYPE	TUBELESS
SIZE(FRONT)	25x 8-12, 26X9-14
SIZE(REAR)	25x10-12, 26X11-14
WHEEL MATERIAL	STEEL or alluminum
PRESSURE FR/RR	0.7/0.98(kgf/cm ²) OR 10/14 psi
BRAKES:	
SYSTEM	FRONT AND REAR UNIFIED
TYPE(FRONT)	DUAL DISC BRAKE
TYPE(REAR)	SINGLE DISC BRAKE
OPERATION	FOOT OPERATION
SUSPENSION:	
FRONT SUSPENSION	DOUBLE A-ARM
REAR SUSPENSION	DOUBLE A-ARM
SHOCK ABSORBER:	COIL SPRING/OIL DAMPER

Specifications

MODEL	UXV700 <i>i</i> (OFF ROAD)
WHEEL TRAVEL:	
FRONT WHEEL TRAVEL	190mm
REAR WHEEL TRAVEL	190mm
ELETRICAL:	
IGNITION SYSTEM	DC, ECU AUTOMATIC CONTROL
GENERATOR SYSTEM	A.C.MAGNETO
BATTERY TYPE	MF-VTX20L
BATTERY CAPACITY	12V18AH
HAEDLIGHT TYPE:	HS1
BULB VOLTAGE	
WATTAGE X QUANTITY:	
HAEDLIGHT:	12V35/35W*2
REAR LIGHT	12V21/5W*2
BRAKE LIGHT	12V21/5W*2
POSITION LIGHT	12V21/5W*2

Specifications

MODEL	UXV700 <i>i</i> (OFF ROAD)
SPECIFIED FUSES:	
MAIN FUSE	30A
FAN MOTER	10A
IGNITION	15A
LIGHT	15A
DC12VPOWER	15A
FUEL	15A
SPARE	15A
EPS	80A(EPS MODEL ONLY)

PERIODIC MAINTENANCE/LUBRICATION

ITEM	WHICHEVER COMES FIRST ROUTINE	INITIAL	EVERY		
		mi	100	600	1200
		Km	150	1000	2000
		MONTH	1	6	12
Engine oil	•Replace (Warm engine before draining).		<input type="radio"/>	<input type="radio"/>	<input type="radio"/>
*Oil strainer	•Clean. •Replace if necessary.		<input type="radio"/>	<input type="radio"/>	<input type="radio"/>
Engine oil filter cartridge	•Replace		<input type="radio"/>	<input type="radio"/>	<input type="radio"/>
Final gear oil	•Check oil level/oil leakage •Replace every 12 months.		<input type="radio"/>		<input type="radio"/>
Differential gear oil	•Check oil level/oil leakage •Replace every 12 months.		<input type="radio"/>		<input type="radio"/>
Air filter element (for engine and *V-belt compartment)	•Clean. (More often in wet or dusty areas.) •Replace if necessary.			<input type="radio"/>	<input type="radio"/>
*Throttle body	•Check idle speed/starter operation. •Clean if necessary.				<input type="radio"/>
*Cylinder head cover breather system	•Check breather hose for cracks or damage. •Replace if necessary.			<input type="radio"/>	<input type="radio"/>
Spark plug	•Check condition. •Adjust gap and clean. •Replace if necessary.		<input type="radio"/>	<input type="radio"/>	<input type="radio"/>
*Fuel line	•Check fuel hose for cracks or damage. •Replace if necessary.			<input type="radio"/>	<input type="radio"/>
*Valves	•Check valve clearance. •Adjust if necessary.		<input type="radio"/>	<input type="radio"/>	<input type="radio"/>

(Cont'd)

ITEM	WHICHEVER COMES FIRST	ROUTINE			
		mi	100	600	1200
		Km	150	1000	2000
	MONTH	1	6	12	
*Brake	<ul style="list-style-type: none"> •Check operation and brake fluid. •Replace brake pad if necessary. 		<input type="radio"/>	<input type="radio"/>	<input type="radio"/>
*Coolant	<ul style="list-style-type: none"> •Check coolant leakage. •Replace if necessary. •Replace coolant every 24 months. 		<input type="radio"/>	<input type="radio"/>	<input type="radio"/>
*V-belt	<ul style="list-style-type: none"> •Check operation. •Replace if damage or excessive wear. 		<input type="radio"/>		<input type="radio"/>
*Exhaust system	<ul style="list-style-type: none"> •Check leakage. •Retighten if necessary. •Replace gasket if necessary. 			<input type="radio"/>	<input type="radio"/>
Spark arrester	<ul style="list-style-type: none"> •Clean 			<input type="radio"/>	<input type="radio"/>
*Wheels	<ul style="list-style-type: none"> •Check balance/damage/runout. •Replace if necessary. 		<input type="radio"/>	<input type="radio"/>	<input type="radio"/>
*Wheel bearings	<ul style="list-style-type: none"> •Check bearing assembly for looseness/damage. •Replace if damaged. 		<input type="radio"/>	<input type="radio"/>	<input type="radio"/>
*Steering system	<ul style="list-style-type: none"> •Check operation. •Replace if damaged. •Check toe-in. •Adjust if necessary. 		<input type="radio"/>	<input type="radio"/>	<input type="radio"/>
*Drive shaft boots	<ul style="list-style-type: none"> •Check operation. •Replace if damaged. 			<input type="radio"/>	<input type="radio"/>
*Suspension	<ul style="list-style-type: none"> •Check operation. •Correct if necessary. 			<input type="radio"/>	<input type="radio"/>

(Cont'd)

ITEM	WHICHEVER COMES FIRST	ROUTINE			
		mi	100	600	1200
		Km	150	1000	2000
		MONTH	1	6	12
*Knuckle shafts/ Steering shaft	•Lubricate every 6 months.			<input type="radio"/>	<input type="radio"/>
*Fittings and Fasteners	•Check all chassis fittings and fasteners. •Correct if necessary.		<input type="radio"/>	<input type="radio"/>	<input type="radio"/>

* : It is recommended that these items be serviced by a KYMCO dealer.

** : Lithium soap base grease.

INDEX

A

Auxiliary Outlet	33
Air Cleaner	68-70

B

Battery remove	71
Brake Fluid Inspection	67
Brake Pedal	44

C

Cargo Bed	46-48
Crossing Water	57
Cooling System Inspection	73

D

Differential Lock Mode	43
Daily Safety Checks	51
Driving Safety	52
Driving Downhill	55
Driving Uphill	56
Driving Reverse	58

E

Emission Control System	59-60
Engine Oil	61-63
EPS (Electronic Power Steering)	34-36

F

Fuel Lever Inspection/Refilling	24
Fuse Replacement	72

TABLE OF CONTENTS

G

Gear Selector 39

I

Indicator Lights 25

Ignition Switch 40

Ignition Switch Key 7

L

Light Switch 41

Location Of Parts 8-11

O

Operation Instruction for Multi-Meter 27-32

P

Periodic Maintenance/Lubrication 83-85

Parking Brake Release 45

Parking 55

R

Right Glove Compartment Key 7

S

Serial Number Locations 5-6

Start The Engine 53-54

Steering Wheel 33

Spark Arrestor 60

Spark Plug Inspection 76

Specifications 78-82

Seat Removal 37

Seat Belts 38

TABLE OF CONTENTS

T

Throttle Pedal 44

Tool Kit 77

U

Under-Hood 49-50

W

2WD/4WD Switch 42-43

Warning Labels Location 12-14

Warning Labels 15-23

Maintenance Record

Maintenance Record

Maintenance Record

Maintenance Record

By KWANG YANG Motor Co., Ltd.

First Edition, Jun. 2017

All rights reserved. Any reproduction or
unauthorized use without the written permission of
KWANG YANG Motor Co., Ltd.
is expressly prohibited.

T200 -UBADKA-A7